

Tessa Guze

Fine Arts
United States

View the full portfolio at <http://www.thecreativefinder.com/tessaguze>

Professional Experience and Curriculum Vitae

Compassion and empathy are two of my main characteristics. These essential elements of my personality are evident in my paintings. I choose to paint things that make me feel passionate, whether it is loving or tearful.

I am inspired by people and animals. I have always sympathized with the underdog, the downtrodden, and the undervalued in every situation. I am compelled to learn about different cultures and ways of life. In my paintings, I attempt to help people to understand and accept those who are different from them. I try to bring characters to life in my paintings so that the viewer can sympathize with them and relate to them.

I paint in oil because I love the rich complexity of the medium. I love that I can spend my entire life painting and never reach the end of the varieties and techniques possible in this medium. It fits my love of diversity, trying new things and learning.

Previous Clientele

Please kindly get in touch for more information.

Awards and Accolades

Roli Books, New Delhi, India

Intern in the Design Department, designed book covers, book layouts, newsletters, posters, and book store website

Kapulti Nagar Daycare/School, Jaipur, India

Teacher in impoverished community

Aalingan Orphanage, Jaipur, India

Teacher and caretaker of HIV positive orphans

Educational Support Services, Moore College of Art & Design, Philadelphia, PA

Peer Tutor: assist students who are struggling in their classes

Admissions Office, Moore College of Art & Design, Philadelphia, PA

Student Ambassador: give tours to prospective students

Resident Assistant, Moore College of Art & Design. Philadelphia, PA

Facilitate community building activities, planning programs, counseling and helping students with issues, making referrals to college resources, keeping the residences in working order, closing and opening the halls before and after breaks and act as a general resource to students

Library, Moore College of Art & Design, Philadelphia, PA

Work Study: assisted students with research and finding sources

Nasher Art Museum, Durham, NC

Tessa Guze

Fine Arts
United States

View the full portfolio at <http://www.thecreativefinder.com/tessaguze>



Tessa Guze

Fine Arts
United States

View the full portfolio at <http://www.thecreativefinder.com/tessaguze>



15b Lloyd Road Singapore 239098 (co. reg. 201004398N)
helpdesk 656.227.2902, fax 656.227.0213

Tessa Guze

Fine Arts
United States

View the full portfolio at <http://www.thecreativefinder.com/tessaguze>



15b Lloyd Road Singapore 239098 (co. reg. 201004398N)
helpdesk 656.227.2902, fax 656.227.0213

Tessa Guze

Fine Arts
United States

View the full portfolio at <http://www.thecreativefinder.com/tessaguze>



15b Lloyd Road Singapore 239098 (co. reg. 201004398N)
helpdesk 656.227.2902, fax 656.227.0213

Tessa Guze

Fine Arts
United States

View the full portfolio at <http://www.thecreativefinder.com/tessaguze>

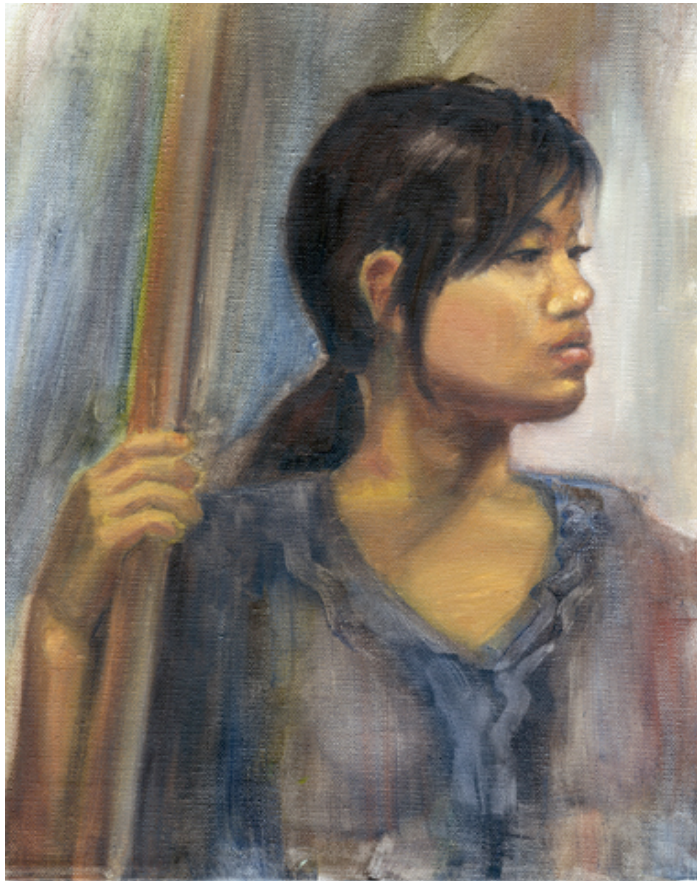


15b Lloyd Road Singapore 239098 (co. reg. 201004398N)
helpdesk 656.227.2902, fax 656.227.0213

Tessa Guze

Fine Arts
United States

View the full portfolio at <http://www.thecreativefinder.com/tessaguze>

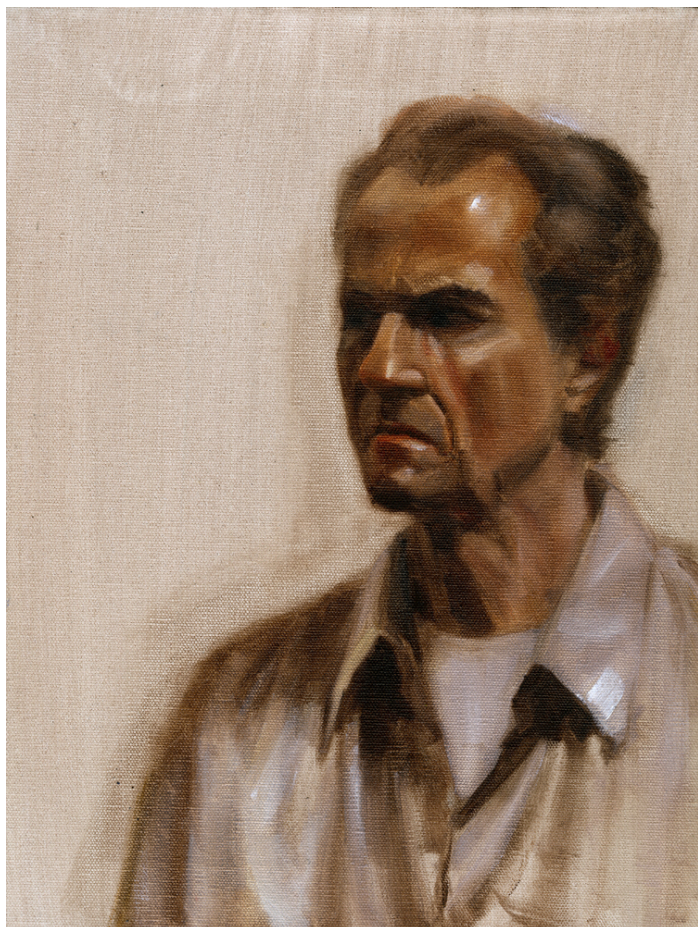


15b Lloyd Road Singapore 239098 (co. reg. 201004398N)
helpdesk 656.227.2902, fax 656.227.0213

Tessa Guze

Fine Arts
United States

View the full portfolio at <http://www.thecreativefinder.com/tessaguze>



15b Lloyd Road Singapore 239098 (co. reg. 201004398N)
helpdesk 656.227.2902, fax 656.227.0213

Tessa Guze

Fine Arts
United States

View the full portfolio at <http://www.thecreativefinder.com/tessaguze>

