

Samantha Wolov

Photography
United States

View the full portfolio at <http://www.thecreativefinder.com/samanthawolov>

Professional Experience and Curriculum Vitae

San Francisco-based photographer Samantha Wolov (b. 1984, Washington, DC) began her art career at the age of sixteen months when her mother would line the shower walls with paper and allow her to finger-paint murals in the bathtub, naked. This love of art would eventually become a degree in Art History from American University. The comfort with nudity would eventually become a brief-but-successful stint in erotic photography.

Wolov, a self-taught artist, now shoots fashion and beauty imagery for editorial clients like FantasticsMag, GLASSbook, and San Francisco, among others.

She prefers a clean, elegant aesthetic with deliberate color palettes as reference to the great artists she had studied in school, while maintaining a suggestion of just the slightest taste of subtle eroticism. Wolov sees herself as a "mad scientist" of sorts when developing stories, constantly drawing from the extensive visual vocabulary her unique background has afforded.

Previous Clientele

Tantalum Magazine
glassBOOK
FantasticsMag
Dimension Magazine
San Francisco Magazine
Inspire Magazine
Cosmopolitan Magazine (German)
Chaos Magazine
Peter Nguyen, Fashion Designer
Steven Oo, Associate Knitwear Designer, Anthropologie
Kat Nacario, Hairstylist, Blush Salon
Marie Potesta, Knitwear and Textile Designer
Antoniya Ivanova, Fashion Designer
Cleis Press

Awards and Accolades

OF NOTE

March 2012 L'Oreal Melbourne Fashion Festival "Fashion Capitals of the World" Exhibition

EDITORIAL

Winter 2012 Tantalum Magazine, Issue Six

Summer 2011 Tantalum Magazine (x2), Issue One

Summer 2011 Glass Magazine (x2), Issue Two

February 2011 FantasticsMag

November 2010 Dimension Magazine (x2)

October 2010 FantasticsMag

December 2009 San Francisco Magazine

Fall 2009 Inspire Magazine

March 2008 Cosmopolitan Magazine (German)

900 Lloyd Road Singapore 239098 (co. reg. 201004398N)
helpdesk 656.227.2902, fax 656.227.0213

Samantha Wolov

Photography
United States

View the full portfolio at <http://www.thecreativefinder.com/samanthawolov>

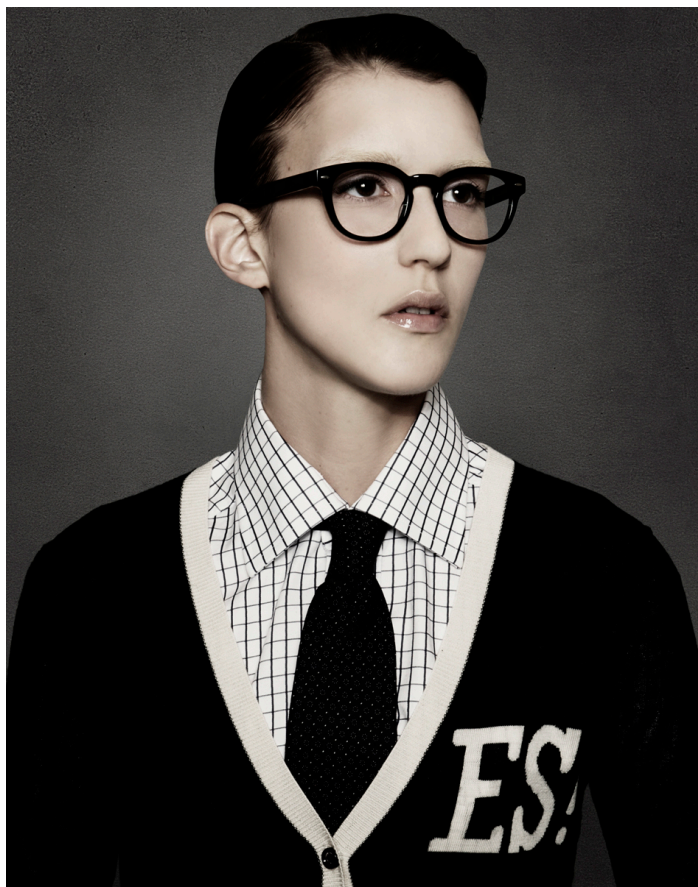


15b Lloyd Road Singapore 239098 (co. reg. 201004398N)
helpdesk 656.227.2902, fax 656.227.0213

Samantha Wolov

Photography
United States

View the full portfolio at <http://www.thecreativefinder.com/samanthawolov>

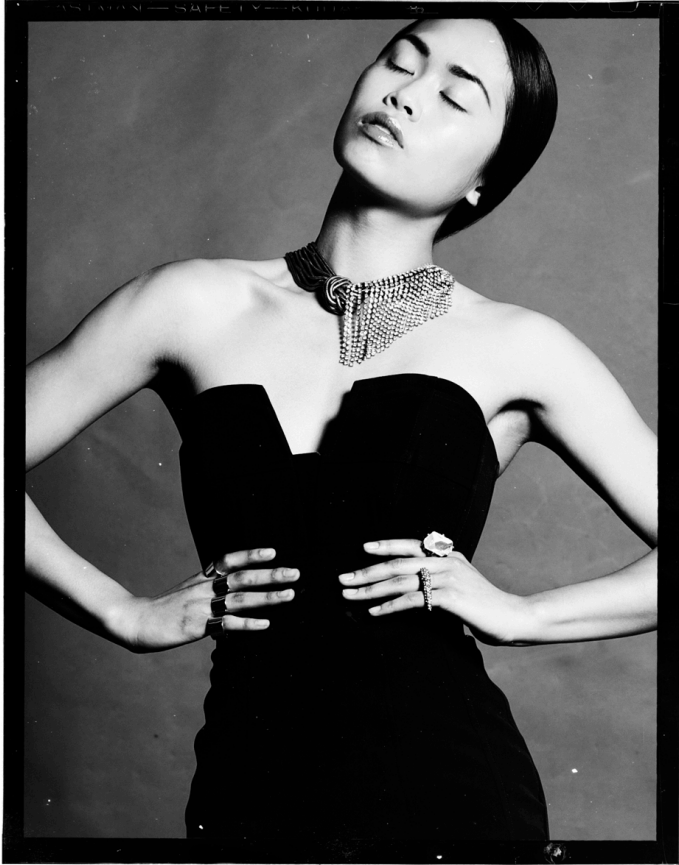


15b Lloyd Road Singapore 239098 (co. reg. 201004398N)
helpdesk 656.227.2902, fax 656.227.0213

Samantha Wolov

Photography
United States

View the full portfolio at <http://www.thecreativefinder.com/samanhawolov>



15b Lloyd Road Singapore 239098 (co. reg. 201004398N)
helpdesk 656.227.2902, fax 656.227.0213

Samantha Wolov

Photography
United States

View the full portfolio at <http://www.thecreativefinder.com/samanthawolov>



15b Lloyd Road Singapore 239098 (co. reg. 201004398N)
helpdesk 656.227.2902, fax 656.227.0213

Samantha Wolov

Photography
United States

View the full portfolio at <http://www.thecreativefinder.com/samanthawolov>



15b Lloyd Road Singapore 239098 (co. reg. 201004398N)
helpdesk 656.227.2902, fax 656.227.0213

Samantha Wolov

Photography
United States

View the full portfolio at <http://www.thecreativefinder.com/samanthawolov>



15b Lloyd Road Singapore 239098 (co. reg. 201004398N)
helpdesk 656.227.2902, fax 656.227.0213

Samantha Wolov

Photography
United States

View the full portfolio at <http://www.thecreativefinder.com/samanthawolov>



15b Lloyd Road Singapore 239098 (co. reg. 201004398N)
helpdesk 656.227.2902, fax 656.227.0213

Samantha Wolov

Photography
United States

View the full portfolio at <http://www.thecreativefinder.com/samanthawolov>



15b Lloyd Road Singapore 239098 (co. reg. 201004398N)
helpdesk 656.227.2902, fax 656.227.0213