

# Patricia Field

Fashion Styling

Creative Exchange Agency / New York

416 West 13th Street, Suite 316

New York, NY 10014

United States

View the full portfolio at [http://www.thecreativefinder.com/patricia\\_field](http://www.thecreativefinder.com/patricia_field)

## Professional Experience and Curriculum Vitae

Patricia Field is considered one of fashion's greatest visionaries: she is an Academy Award nominated and Emmy Award winning film and television Costume Designer and a boutique owner with her own clothing label. Patricia raised the standards for the world of television glamour when she costumed *Sex and the City*, the most fashionable show in television history. Critics praised her run with *Sex and the City*'s stunning and always entertaining costuming, as it was a large part of the show's status as a cultural phenomenon. Fashion editors, socialites, and celebrities alike adopted Patricia's clothing and style philosophy and regularly sat front row at her House of Field fashion shows. She is a true pioneer, bringing forth a new style of dressing to American women, and through the media she has been able to stimulate an entire fashion movement throughout the world.

While the days of *Sex and the City* have come to an end, the exciting reign of Patricia Field will live on and transcend through several new projects that will surely turn heads. She recently acted as Costume Designer for the 2006 feature film *The Devil Wears Prada*, an expose of the fashion industry starring Meryl Streep, which is currently up for many awards. She also styled television's *Hope and Faith* and is most recently working on the new show *Six Degrees*. In 2005 Candie's Shoes commissioned her to design a limited edition collection of footwear and accessories, "Candie's by Patricia Field". During the last presidential campaign Patricia launched her "Let's Vote" tee to raise consciousness among the fashionable. Proceeds from the sale of the tees went to Rock the Vote, a nonprofit organization that encourages young people to vote. She has designed a collection for Rocawear, developed a limited edition Patricia Field collection for Pro-Keds, and in collaboration with the Japanese brand Ash & Diamonds designed a line of watches for Seiko Japan. Patricia has been acting as Creative Director for the Japanese brand Smacky Glam since 2004, and has been styling their campaigns in collaboration with famed photographer Ellen Von Unworth. She also developed a Patricia Field web boutique for Coffers Japan, designed costumes in Athens for the Greek Music Awards, and directed costuming for the musical "Barbarella" in Vienna.

Patricia has been a Costume Designer for almost twenty years now and her impressive list of projects in both television and film include the hit television shows *Crime Story*, *Wiseguy*, and *Spin City*. Film projects include *Miami Rhapsody* (where she first met Sarah Jessica Parker), *The Substitute* and *Dear Diary*. In 1989, she received an Emmy for Outstanding Costumes for a Miniseries, Movie or a Special for Disney's television feature *Mother Goose Rock and Rhyme*. She has won the Emmy award for Outstanding Costumes for a Series for her trend-setting fashions on HBO's *Sex and the City* and her other awards include Stylist of the Year by the CFDA (a new award category created on the principle of Patricia's work), the Albert Einstein Award for innovation, and Fashion Council's Accessories Award for making accessories prominent and highly desired on the fashion scene.

Patricia Field is a native New Yorker and began her career when she opened her eponymous Greenwich Village boutique in 1966, catering to fashionistas and "in the know" scenesters. For over 30 years, this downtown institution has been an internationally known favorite of the fashion-forward and has been a defining factor in the urban style of New York's glittery nightlife. In 2006 Patricia Field blazed the fashion trail by designing a completely new boutique on the up and coming Bowery Street in New York City. Who knows what she'll do next!

# Patricia Field

Fashion Styling

Creative Exchange Agency / New York

416 West 13th Street, Suite 316

New York, NY 10014

United States

View the full portfolio at [http://www.thecreativefinder.com/patricia\\_field](http://www.thecreativefinder.com/patricia_field)



# Patricia Field

Fashion Styling

Creative Exchange Agency / New York

416 West 13th Street, Suite 316

New York, NY 10014

United States

View the full portfolio at [http://www.thecreativefinder.com/patricia\\_field](http://www.thecreativefinder.com/patricia_field)



# Patricia Field

Fashion Styling

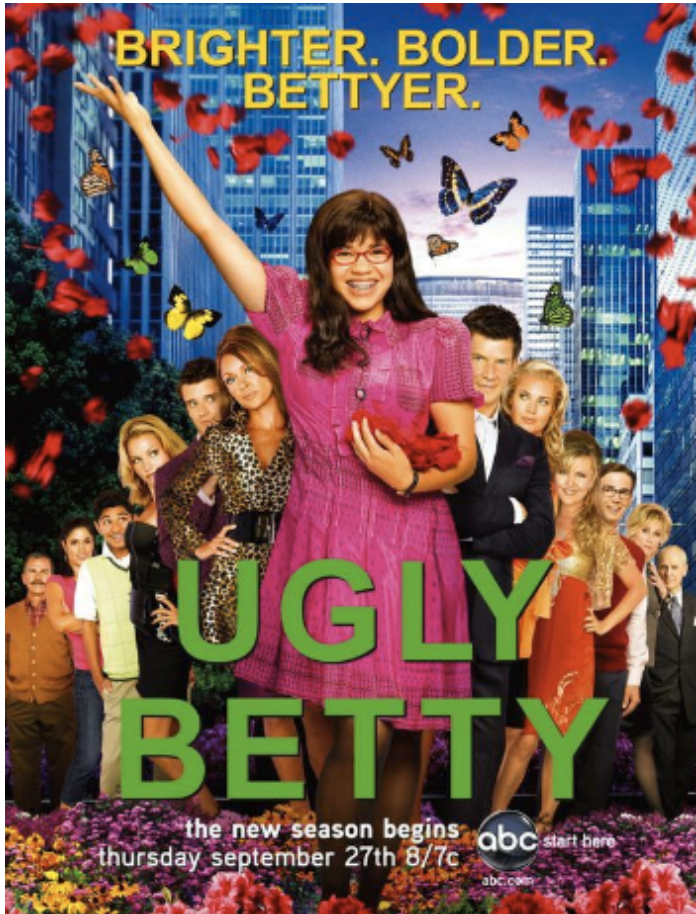
Creative Exchange Agency / New York

416 West 13th Street, Suite 316

New York, NY 10014

United States

View the full portfolio at [http://www.thecreativefinder.com/patricia\\_field](http://www.thecreativefinder.com/patricia_field)



15b Lloyd Road Singapore 239098 (co. reg. 201004398N)  
helpdesk 656.227.2902, fax 656.227.0213

# Patricia Field

Fashion Styling

Creative Exchange Agency / New York

416 West 13th Street, Suite 316

New York, NY 10014

United States

View the full portfolio at [http://www.thecreativefinder.com/patricia\\_field](http://www.thecreativefinder.com/patricia_field)





# Patricia Field

Fashion Styling

Creative Exchange Agency / New York

416 West 13th Street, Suite 316

New York, NY 10014

United States

View the full portfolio at [http://www.thecreativefinder.com/patricia\\_field](http://www.thecreativefinder.com/patricia_field)



15b Lloyd Road Singapore 239098 (co. reg. 201004398N)  
helpdesk 656.227.2902, fax 656.227.0213

# Patricia Field

Fashion Styling

Creative Exchange Agency / New York

416 West 13th Street, Suite 316

New York, NY 10014

United States

View the full portfolio at [http://www.thecreativefinder.com/patricia\\_field](http://www.thecreativefinder.com/patricia_field)



15b Lloyd Road Singapore 239098 (co. reg. 201004398N)  
helpdesk 656.227.2902, fax 656.227.0213