

Nanci Erskine

Painting
United States

View the full portfolio at <http://www.thecreativefinder.com/nerskine>

Professional Experience and Curriculum Vitae

Nanci has a BFA from the University of Oregon, and an MA/MFA from University of Iowa,, and has taught at colleges in Kentucky, Virginia, Maryland, and Colorado. When not painting or messing with other art materials, she might be gardening, or volunteering with the local hospice organization.

Previous Clientele

Please kindly get in touch for more information.

Awards and Accolades

NANCI ERSKINE Painting / Drawing / Monotypes home- 970 224-2553 cell- 970 402-7621

E-Mail: nerskine@comcast.net Website: erskinestudio.com

EDUCATION

MA/ MFA University of Iowa 1987/1988

BFA University of Oregon 1983 Cum Laude

Portland Museum School 1971 Lewis and Clark College 1968-70

AWARDS / GRANTS

Creative Capital Grant, Beet Street/Creative Capital Foundation, April 2012

Honorable Mention - Rocky Mountain Biennial, (juror- Jan Ernst Adlmann), April 2004

Individual Artist Fellowship, Painting - Colorado Council on the Arts, March 2002

Merit Award - Colorado 2002 Juried Exhibition, Colorado Springs Fine Arts Center, 2002

Individual Artist Fellowship, Drawing - Colorado Council on the Arts, January 1998

Instructional Innovation Award, Eighth Mary Scott Lecture Series, Colorado State University ,

November 1998

Merit Award - "Drawing From Perception"(juror- Rackstraw Downes) 1998

Professional Development Grants 1994, 1995, 1997, 1998, 1999

Career Enhancement Grants 1995, 1996, 1997 /

Instructional Development Grants 1996, 1998

COLLECTIONS

Kaiser Permanente Clinic, Fort Collins, CO

American Century Investments, Denver, CO

Safeco Insurance Corporation, Redmond, WA

University of Iowa, Iowa City, IA

Coe College, Cedar Rapids, IA

Seattle Arts Commission Print Collection, Seattle, WA

Stonybrook School, Stonybrook, Long Island, NY

University of Oregon -Art and Architecture Building, Eugene, OR

Mundt McGregor Law Firm, Seattle, WA

Art in Public Places, City of Fort Collins, CO 2008, 2010 and 2011 commissions

Norman Lundin, Leslie Nelson, Jim Nelson, Tilman Smith, Ross and Mark Drangsholt,

Gerald Patterson, Seattle; John Clopton, Texas; John MacIntyre, Laguna Beach, CA.;

Cordell Taylor, Utah; Ingo Orgzall, Potsdam, Germany; other private and corporate in

California, Washington, Arizona and Colorado helpdesk 656.227.2902, fax 656.227.0213

SOLO EXHIBITIONS

2007 Pierce College, Tacoma, WA 2006 Davis and Cline, Ashland, OR

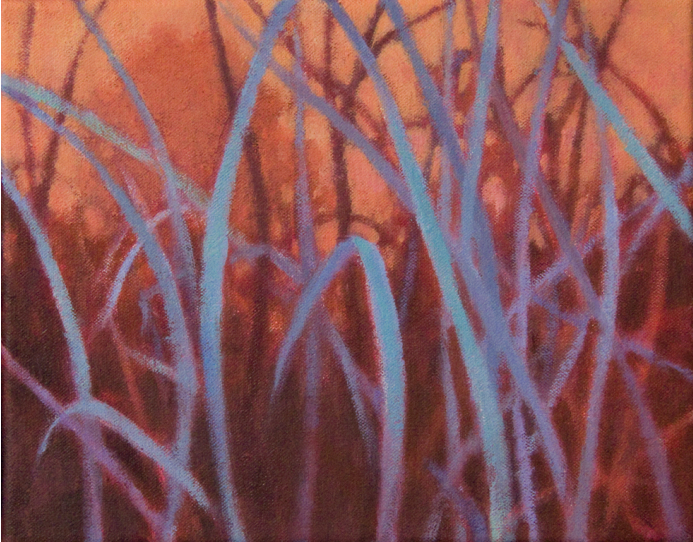
2005 Francine Seders Gallery, Seattle, WA

Nanci Erskine

Painting
United States

View the full portfolio at <http://www.thecreativefinder.com/nerskine>

Please kindly get in touch for portfolio works.

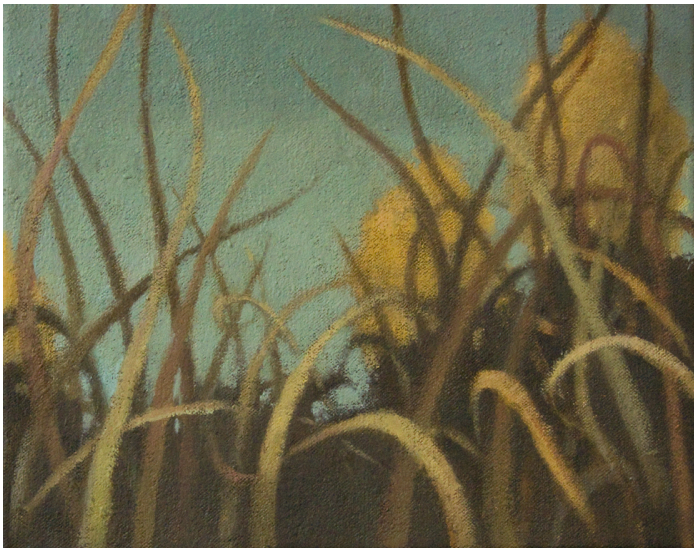


15b Lloyd Road Singapore 239098 (co. reg. 201004398N)
helpdesk 656.227.2902, fax 656.227.0213

Nanci Erskine

Painting
United States

View the full portfolio at <http://www.thecreativefinder.com/nerskine>



15b Lloyd Road Singapore 239098 (co. reg. 201004398N)
helpdesk 656.227.2902, fax 656.227.0213

Nanci Erskine

Painting
United States

View the full portfolio at <http://www.thecreativefinder.com/nerskine>



15b Lloyd Road Singapore 239098 (co. reg. 201004398N)
helpdesk 656.227.2902, fax 656.227.0213

Nanci Erskine

Painting
United States

View the full portfolio at <http://www.thecreativefinder.com/nerskine>



15b Lloyd Road Singapore 239098 (co. reg. 201004398N)
helpdesk 656.227.2902, fax 656.227.0213

Nanci Erskine

Painting
United States

View the full portfolio at <http://www.thecreativefinder.com/nerskine>



15b Lloyd Road Singapore 239098 (co. reg. 201004398N)
helpdesk 656.227.2902, fax 656.227.0213

Nanci Erskine

Painting
United States

View the full portfolio at <http://www.thecreativefinder.com/nerskine>



15b Lloyd Road Singapore 239098 (co. reg. 201004398N)
helpdesk 656.227.2902, fax 656.227.0213

Nanci Erskine

Painting
United States

View the full portfolio at <http://www.thecreativefinder.com/nerskine>



15b Lloyd Road Singapore 239098 (co. reg. 201004398N)
helpdesk 656.227.2902, fax 656.227.0213