

# John Berry

Photography  
United States

View the full portfolio at <http://www.thecreativefinder.com/johnberryshootspeople>

## Professional Experience and Curriculum Vitae

"Take your cameras EVERYWHERE, except the shower." "Always KEEP them ready to shoot INSTANTLY." "The Pulitzer Prize and great images happen in an instant." Words from a Photo Editor. They installed habits and work ethics that allow me to make fast decisions and respond instantly. Fast thinking. Instant responses. From Spot News to Corporate views. To get YOU images that stop time.

Every time.

## Previous Clientele

TIME; Esquire; Newsweek; Associated Press; The New York Times; LeFigaro; Der Spiegel; Musician; Guitar World; Miami Business Journal; Dallas Morning News; Dallas Observer; Seattle Business Journal; Eastside Journal American newspaper; Pacific Sun newspaper; National Enquirer; South Florida magazine; Ocean Drive magazine; Miami Times; Michelle Pommier Agency; L'Agence Models; Bal Harbour Shops; JC Penny; Fashion Portfolio magazine; Federal Express; Pan Am Airlines; United Parcel Service, etc.

## Awards and Accolades

Graduated AIA, in Photography, 1980.

Photo Editor Fashion Portfolio Magazine 1980's

Dallas - AP and New York Times stringer 1988 - 1991

Gamma Liaison photographer from 1989 to Getty accusation.

Photographer at John Berry SHOOTS People.

## Awards and Accolades

"Best Photo of the Year  
1992", LeFigaro magazine.

My studio is the world ... I shoot assignments  
ANYWHERE in the Universe! If it can be  
photographed, I can probably shoot it for you! If  
not, I will connect you with who you need...

Let's talk it over. Shoot me a message here or  
call me! USA: (305) 333-9052 Thailand: +66 9  
4309 6865

# John Berry

Photography  
United States

View the full portfolio at <http://www.thecreativefinder.com/johnberryshootspeople>

Please kindly get in touch for portfolio works.



# John Berry

Photography  
United States

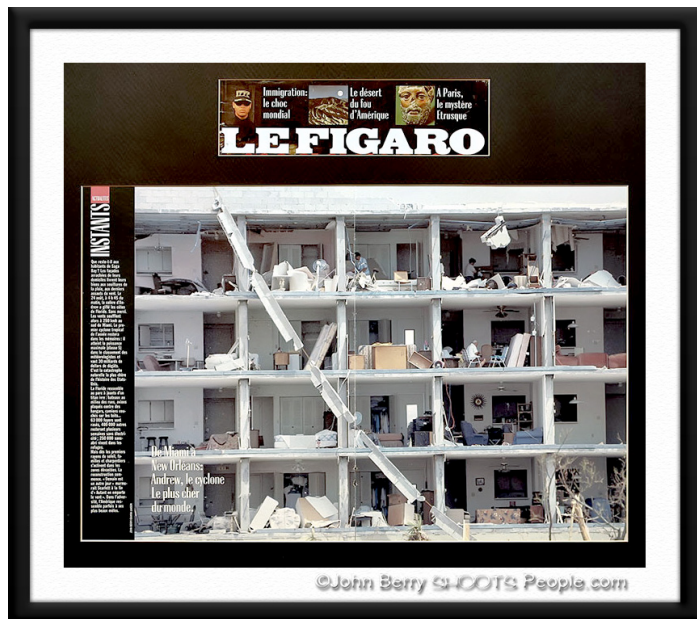
View the full portfolio at <http://www.thecreativefinder.com/johnberryshootspeople>



# John Berry

Photography  
United States

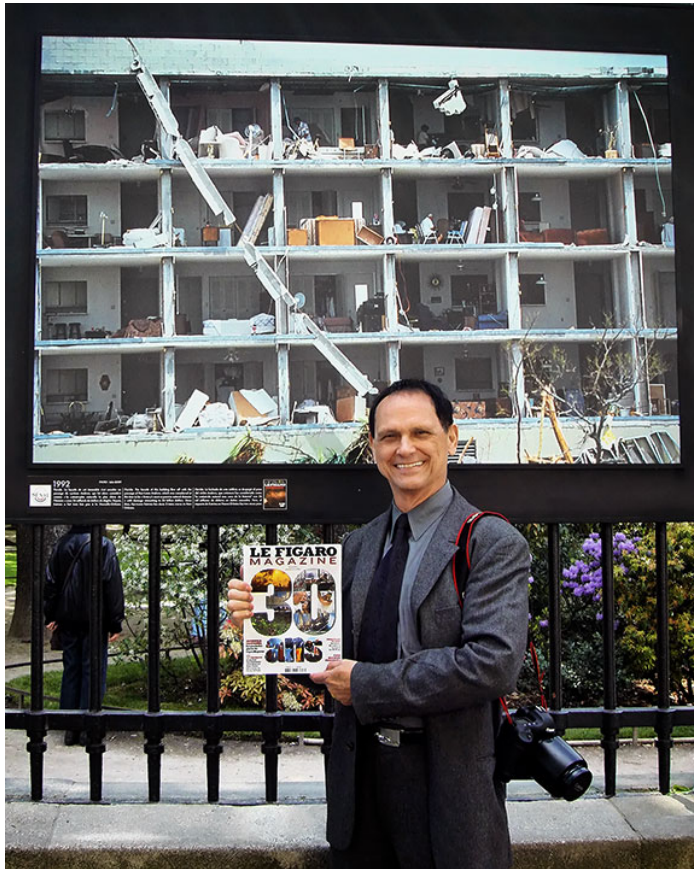
View the full portfolio at <http://www.thecreativefinder.com/johnberryshootspeople>



# John Berry

Photography  
United States

View the full portfolio at <http://www.thecreativefinder.com/johnberryshootspeople>



# John Berry

Photography  
United States

View the full portfolio at <http://www.thecreativefinder.com/johnberryshootspeople>



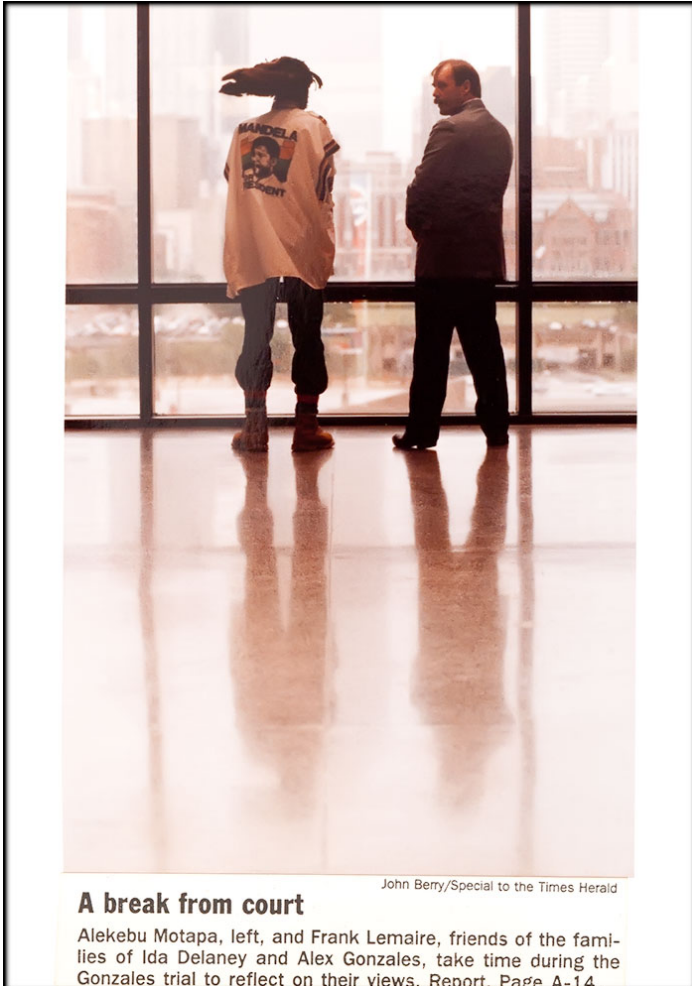
JOHN BERRY / ASSOCIATED PRESS

**Four-year-old** Kelly VanArsdale puts on a pumpkin face this week as she and her classmates from Sammamish Montessori School tour a pumpkin patch in Fall City.

# John Berry

Photography  
United States

View the full portfolio at <http://www.thecreativefinder.com/johnberryshootspeople>



# John Berry

Photography  
United States

View the full portfolio at <http://www.thecreativefinder.com/johnberryshootspeople>

## scene 現場

「まるで戦場だ。現地に派遣された州兵は思わずつぶやいたという。家は土台だけを残し、まさに跡形もなく吹き飛ばされ、あたりには粉々になった残骸が散らばり、積み重なっていた。右の写真、最大瞬間風速70メートルのハリケーンは、基地の下16戦機を吹き飛ばし、船をもにぎってしまった。史上最大規模といわれるハリケーン・アンドリューが、マイアミの南東40キロのデイド部に上陸したのは8月24日。アンドリューは、街路樹をなぎ倒し、屋根を吹き飛ばし、車の窓ガラスを砕き、人々の家の屋根が吹き飛ばされ、中でも被害の大きかったホームステッドでは文字通り全戸が屋根を吹き飛ばされたという。住民たちは屋根のなくなった家の中をパスタの缶をひたすら待つすがすがしなかった。アンドリューは、その後の26日、今度はマイアミ南のモーンガン市に再上陸。ここでも、また被害を蒙った。結局、各州合わせて20人が死に、200万人が避難し、フロリダ州だけでも、その被害額は200億ドル（約2兆5000億円）に達する見込みだというのである。ちなみに89年に東北のカロライナ州を襲ったハリケーン・ヒューゴの損害額は推定100億ドルに達した。アンドリューの被害は、これほどのものであったか想像がつく



PHOTO: John Berry / Gamma Liaison / Imperial Press

だ。ハリケーンは、さらにいくつかの被害をもたらした。死者があるし、かならずのこと起こる。結果も、その一つ。そのためフロリダ州には州民300万人を出動させ、24日からは外出禁止令まで出された。アラバマ州の海岸に、24日にはニュージャージー、コネチカットの避難民が現地に入り、災害地域に指定するという書き込みを見せた。さらにルイジアナも視察。翌日には連邦軍7000人の派遣を決定する対応だったのである。実は、今年5月のロスレーンには大統領より民主党のタレント候補が先に現地入り。遅れをとった苦い経験があり、またフロリダが全米でも最悪の選挙人を抱える大衆田ということも考えれば、当然のことだったかもしれない。フロリダといえば、アメリカの中間階級が、真に上流で金持を「送る」ための理想の場所。アンドリューは、その理想を打ち壊した。中産階級の「避難先」を壊してしまった。もう一つの被害は、悪天候な被害を受けたのがヒスパニック系住民の多い貧困層者層だった。プッシュ大統領は、果たしてこのような被害者救済に緊急に対応できるだろうか。ヘタをすればアンドリューは大統領にとっても惨い存在にならねないであろう。

PHOTO: Bill Weiss / Gamma Liaison / Imperial Press

John Berry  
Photography  
United States

View the full portfolio at <http://www.thecreativefinder.com/johnberryshootspeople>

pdn

PHOTO DISTRICT NEWS

Tip From the authors  
Adobe Photoshop  
Lightroom 2


Check out a r  
Adjustment T  
Dave Huss an  
Adobe Photo

HOME NEWS FEATURES GEAR CONTESTS RESOURCES COMMUNITY MULTIMEDIA EXPO

PDN Online Home > Photoserve

PhotoServe.com A VISUAL DATABASE OF THE WORLD'S BEST PHOTOGRAPHERS

PORTFOLIOS OF THE MONTH



John Berry


JOIN NOW


PORTFOLIO RATES

CONTACT US

RECENTLY UPDATED

More Recently Updated Portfolios





John Berry/Special to the Times Herald

**Hot day for a Bug**  
Derek Stokes of Dallas had just gotten his Volkswagen when the car's engine exploded Monday afternoon at Wycliff Avenue and Dallas North Tollway.

# John Berry

Photography  
United States

View the full portfolio at <http://www.thecreativefinder.com/johnberryshootspeople>



15b Lloyd Road Singapore 239098 (co. reg. 201004398N)  
helpdesk 656.227.2902, fax 656.227.0213

# John Berry

Photography  
United States

View the full portfolio at <http://www.thecreativefinder.com/johnberryshootspeople>

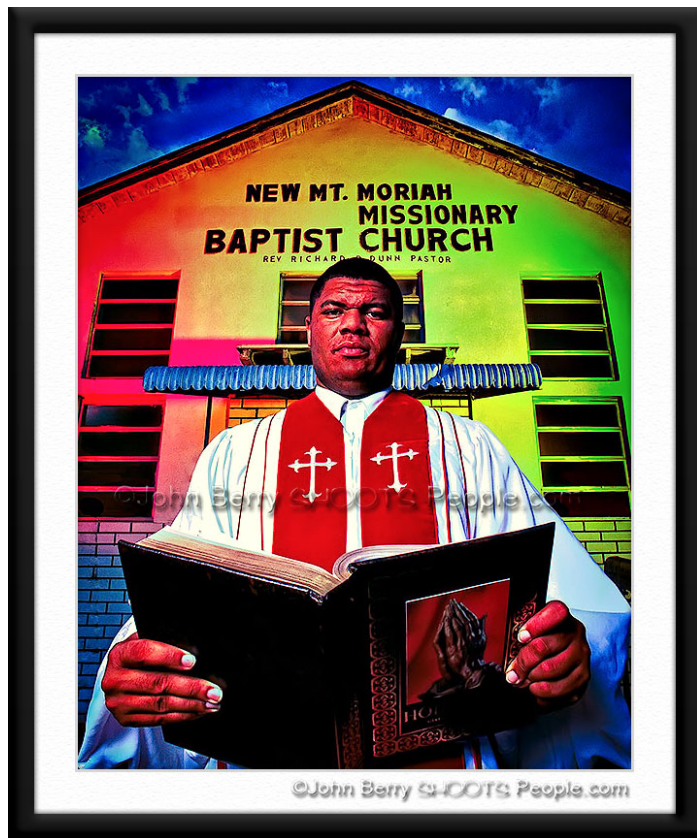


15b Lloyd Road Singapore 239098 (co. reg. 201004398N)  
helpdesk 656.227.2902, fax 656.227.0213

# John Berry

Photography  
United States

View the full portfolio at <http://www.thecreativefinder.com/johnberryshootspeople>



15b Lloyd Road Singapore 239098 (co. reg. 201004398N)  
helpdesk 656.227.2902, fax 656.227.0213

# John Berry

Photography  
United States

View the full portfolio at <http://www.thecreativefinder.com/johnberryshootspeople>



15b Lloyd Road Singapore 239098 (co. reg. 201004398N)  
helpdesk 656.227.2902, fax 656.227.0213

# John Berry

Photography  
United States

View the full portfolio at <http://www.thecreativefinder.com/johnberryshootspeople>



15b Lloyd Road Singapore 239098 (co. reg. 201004398N)  
helpdesk 656.227.2902, fax 656.227.0213

# John Berry

Photography  
United States

View the full portfolio at <http://www.thecreativefinder.com/johnberryshootspeople>



15b Lloyd Road Singapore 239098 (co. reg. 201004398N)  
helpdesk 656.227.2902, fax 656.227.0213

# John Berry

Photography  
United States

View the full portfolio at <http://www.thecreativefinder.com/johnberryshootspeople>



15b Lloyd Road Singapore 239098 (co. reg. 201004398N)  
helpdesk 656.227.2902, fax 656.227.0213

# John Berry

Photography  
United States

View the full portfolio at <http://www.thecreativefinder.com/johnberryshootspeople>



15b Lloyd Road Singapore 239098 (co. reg. 201004398N)  
helpdesk 656.227.2902, fax 656.227.0213

# John Berry

Photography  
United States

View the full portfolio at <http://www.thecreativefinder.com/johnberryshootspeople>



15b Lloyd Road Singapore 239098 (co. reg. 201004398N)  
helpdesk 656.227.2902, fax 656.227.0213

# John Berry

Photography  
United States

View the full portfolio at <http://www.thecreativefinder.com/johnberryshootspeople>



15b Lloyd Road Singapore 239098 (co. reg. 201004398N)  
helpdesk 656.227.2902, fax 656.227.0213

# John Berry

Photography  
United States

View the full portfolio at <http://www.thecreativefinder.com/johnberryshootspeople>



15b Lloyd Road Singapore 239098 (co. reg. 201004398N)  
helpdesk 656.227.2902, fax 656.227.0213

# John Berry

Photography  
United States

View the full portfolio at <http://www.thecreativefinder.com/johnberryshootspeople>



15b Lloyd Road Singapore 239098 (co. reg. 201004398N)  
helpdesk 656.227.2902, fax 656.227.0213

# John Berry

Photography  
United States

View the full portfolio at <http://www.thecreativefinder.com/johnberryshootspeople>



15b Lloyd Road Singapore 239098 (co. reg. 201004398N)  
helpdesk 656.227.2902, fax 656.227.0213

# John Berry

Photography  
United States

View the full portfolio at <http://www.thecreativefinder.com/johnberryshootspeople>



15b Lloyd Road Singapore 239098 (co. reg. 201004398N)  
helpdesk 656.227.2902, fax 656.227.0213

# John Berry

Photography  
United States

View the full portfolio at <http://www.thecreativefinder.com/johnberryshootspeople>



15b Lloyd Road Singapore 239098 (co. reg. 201004398N)  
helpdesk 656.227.2902, fax 656.227.0213