

Someone

View the full portfolio at <http://www.thecreativefinder.com/>

Professional Experience and Curriculum Vitae

Please kindly get in touch for more information.

Previous Clientele

Please kindly get in touch for more information.

Awards and Accolades

Please kindly get in touch for more information.

Awards and Accolades

Please kindly get in touch for more information.

Someone

View the full portfolio at <http://www.thecreativefinder.com/>



View the full portfolio at <http://www.thecreativefinder.com/>

MUSIC

Damaged Goods



50 CENT
Before I Self Destruct (Aftermath)

★★



Ahead of the release of his fourth album, Curtis James Jackson III promised that it would be "darker and more aggressive" than its predecessor. Oh great. It's hard to think of anything that hip hop, or, indeed, the world, needs less than a darker, more aggressive 50 Cent.

It sounds like the most unwelcome development in his career since *Blood On The Sand*, his morosically violent shoot 'em up video game, released earlier this year.

Initially, Before I Self Destruct lives down to its maker's depressing claims.

On the opening track, The Invitation, 50 boasts about having "more guns than a gun shop", threatens violence against anyone and everyone, and raps about setting up crack houses.

You'd have to be a 14-year-old fantasist to classify this as entertainment. It's not. The well-worn defence that it's a just reflection of real life on the streets is just so much blah. This is a form of musical porn.

Then Dr Dre enters stage left to confuse the issue. He produces four out of the 16 tracks, and musically at least, they are hip hop gold. Death To

My Enemies is built around a twangy guitar riff that echoes Dre's masterpiece, The Chronic, while OK, You're Right combines a stop-start beat with orchestral stabs and eerie female vocals in a rap opus. Just try not nodding your head.

As one of hip hop's biggest names, so has his top beatsmith on speed dial, and however inexcusable the imagery, there's no denying there are some compelling moments here. Whether it's worth tuning out the guns, bitches and casual violence is another matter.

Chris Cottingham

ALBUMS

CODEINE VELVET CLUB
Codeine Velvet Club (Island)

★★★

In which John Lawler, lead singer with The Fratellis, teams up with singer-songwriter Lou Hickey to record an album of '60s orchestral pop. The result is not unlike The Last Shadow Puppets. Decent enough, but isn't this the rock version of Robbie Williams' big band album, Swing When You're Winning?

ERIK HASSLE
Pieces (Capitamy Int'l/Island)

★★★★

Already a big deal in his native Sweden, 21-year-old Erik Hassle has yet to make an impression in the

STEREOPHONICS
Keep Calm And Carry On (Mercury)

★★★★

Stereophonics (lead singer Kelly Jones, right) are the very definition of meat 'n' potatoes rock. And they've done very well out of it — their last five albums have gone to Number 1. They stick to the lod-rock formula here, only going off-road with the electronic beats of Beerbottle. No surprises, then. Which is evidently the way their fans like it.

SINGLES

JASON DERÜLO
Whatcha Say (Warner/Beluga Heights)

★★

Jason Derülo's debut single has already topped the American charts, selling 750,000 copies in the process. It's not clear why. There's nothing special about the R&B beats, Derülo's auto-tuned vocals or the sample from Imogen Heap's song Hide And Seek. He sounds like a cut-price Alcaz.

ELLIE GOULDING
Under The Sheets (Neon Gold)

★★★★

Ellie Goulding is a little bit different. The 22-year-old singer's debut single is pitched somewhere between the electro pop of La Roux

and Laura Marling's folkiness — electro-folk, perhaps. Her warbling voice, meanwhile, is all her own. She's sure to feature in the ones to watch for 2010 lists.

GROOVE ARMADA
I Won't Kneel (Cooking Vinyl)

★★★★

On a recent Australian tour, Groove Armada's Tom Findlay said that his band's "darker side... was finally coming out after 12 years", hence the title of their forthcoming eighth album, *Black Light*, released next year. You couldn't describe the lead single as particularly dark, although the moody synths, '80s guitar riffs and singer Saint Savour's stident vocals are certainly poppier than anything they've done in the past.

28 | www.bigissue.com November 16 - 22 2009

Someone

View the full portfolio at <http://www.thecreativefinder.com/>

SUMMER EVENTS

THE SPECIALS

When The Specials got back together at the beginning of this year, frontman Terry Hall told one interviewer: "I know how precious this band is to a lot of people."

But even he must have been surprised at quite how precious. The first round of dates on their reunion tour sold 45,000 tickets in an hour. Which is why the ska icons have added a second leg (billed as the "final dates" on their website).

The triumphant return might have something to do with the times. The Specials captured the

"The first dates on their tour sold 45,000 tickets in an hour"

melancholy of late '70s and early '80s Britain on songs such as Ghost Town and Gangsters. Fast forward 30 years and the same issues – recession, unemployment and racism – are back in the headlines, and The Specials find themselves chiming with the times once again.

Crucially, they remain an electrifying live band, which elevates the whole enterprise above your bog-standard nostalgia trip.

The band's 19-date tour continues this week and concludes with a three-night stand at the Hammermith Apollo in London at the end of the month.

www.thespecials.com

The Specials: timely

GIGS

BEYONCÉ

Following last year's I Am... Sasha Fierce album, Beyoncé's world tour, which started back in April, has arrived in the UK. The 28-year-old diva comes fresh from winning three gongs at the European Music Awards. Her eight-date tour continues this week. www.beyonceonline.com

SLAYER

Slayer's 11th album, World Painted Blood, was released earlier this month. Twenty-eight years into their careers, they still rock harder than bands half their age. The metal legends' seven-date UK tour starts in Nottingham this Wednesday. www.slayer.net

LLY ALLEN

Is she quitting the music business, or not? There may be no sign of a new record contract, but still, this week the answer would appear to be not. Lly Allen's (single) 15-date tour starts Monday in Sheffield. www.llyallenmusic.com

Buy your gig tickets at www.bigissue.com/gigs and 20% of the booking fee goes to The Big Issue

EVERY SONG PLAYED IS A CLASSIC AT...

HAIRBRUSH HEROES

Free Entry With this ad! 20 Nov 84 11.30

Friday 20th November
The Jazz Cafe, Camden
HairBrushHeroes.com

THE BIG ISSUE COMPETITION

WIN THE CHANCE TO SEE JOHN MAYER AT SONY ERICSSON PRESENTS Q THE MUSIC CLUB LIVE AT HARD ROCK CAFE

We are offering one lucky reader the chance to win a pair of tickets to an intimate, early gig with John Mayer at the Hard Rock Cafe on Monday 30th November as part of the Sony Ericsson Q The Music Club Live series. The singer will take to the stage for this intimate show to give an exclusive preview of his new album.

To be in with a chance of winning simply answer the following question:

Q. What is the name of John Mayer's new album?

A Battle Studies
B Learning to Battle
C The Art of War

Send in your answer & full contact details on a postcard to: Big Issue Compex, 1-5 Wandsworth Rd, London SW6 2LN or via email to: compex@bigissue.com. Competition closes Friday 1st Wednesday November 20th 2005.

TERMS & CONDITIONS: Competition open to all UK resident legal residents of The Big Issue, whose responses must be sent to the above address by the closing date. Prizes are awarded on a random basis. The Big Issue is not responsible for any loss of data or any other loss of information. The Big Issue is not responsible for any loss of information. The Big Issue is not responsible for any loss of information. The Big Issue is not responsible for any loss of information.

Someone

View the full portfolio at <http://www.thecreativefinder.com/>

Custom Printed Bike Bottles

.69 ea
Free Screen & Setup

Price Buster
Brand Builder
Traffic Booster

- Bottle: 22 oz. All White
- Cap Color: Translucent Red, Blue, Black, Green and Solid White
- 63 mm wide mouth for Ez-Fill
- Minimum Quantity 100

Call or Fax Today!
Phone: 815-543-6811
Fax: 815-965-1329

The Promo ER, LLC
visit www.thepromoer.com

GOVERNMENT WARNING: (1) ACCORDING TO THE SURGEON GENERAL, WOMEN SHOULD NOT DRINK ALCOHOLIC BEVERAGES IF THEY ARE BREASTFEEDING. (2) EXCESSIVE CONSUMPTION OF ALCOHOLIC BEVERAGES IMPAIRS YOUR ABILITY TO DRIVE A CAR OR OPERATE MACHINERY, AND MAY CAUSE HEALTH PROBLEMS.

Asheville Brewing

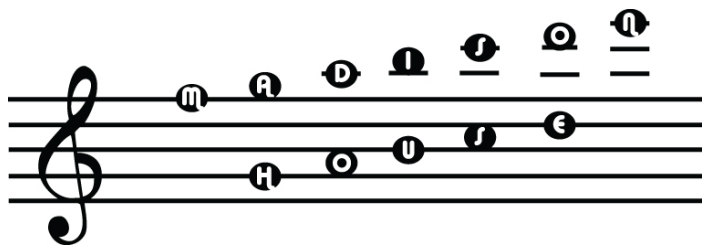
The Escape Artist Ale

Brewed by Asheville Brewing Company
77 Cove Avenue Asheville, NC 28801
ashevillebrewing.com

1 pint 6 fluid oz.

Someone

View the full portfolio at <http://www.thecreativefinder.com/>



NITE No-Idle Solutions

- CARB Approval # 08-643-004
- Increased driver retention
- Longer engine life
- Annual Savings up to 3,800 gallons of diesel per truck*
- Costs less than most diesel powered APUs
- Decreased maintenance costs

*Based on idling 6 cylinder, 1000 idling RPMs, 8 hours per day, 300 days per year. Ref: www.epa.gov

NITE PLUS A Division of Bergquist Inc.	NITE A Division of Bergquist Inc.	NITE A Division of Bergquist Inc.
SLEEPER SOLUTION 4,600 BTU/h	SLEEPER SOLUTION 7,500 BTU/h	DAY CAB SOLUTION 7,200 BTU/h

www.nitesystem.com • 1-866-204-8570

15b Lloyd Road Singapore 239098 (co. reg. 201004398N)
helpdesk 656.227.2902, fax 656.227.0213

Someone

View the full portfolio at <http://www.thecreativefinder.com/>



NITE No-Idle Accessories

- Bunk Heaters
- Coolant Heaters
- Battery Chargers
- Inverters
- Sun Reflector
- Battery Boxes
- Batteries

www.nitesystem.com • 1-866-204-8570



NITE No-Idle Accessories

- Bunk Heaters
- Coolant Heaters
- Battery Chargers
- Inverters
- Sun Reflector
- Battery Boxes
- Batteries

www.nitesystem.com • 1-866-204-8570

15b Lloyd Road Singapore 239098 (co. reg. 201004398N)
helpdesk 656.227.2902, fax 656.227.0213

Someone

View the full portfolio at <http://www.thecreativefinder.com/>



Summer Sizzling Special

8oz, 16oz, and 24oz Spray Bottle with Multi-Color Trigger Sprayer and 1 color imprint.

200	2:25 (R)
500	2:16 (R)
1000	2:07 (R)

88¢ net

- Bulk packed, assembly add .12 ea.
- Other color and styles available

Call for pricing.

Order Today!
1-800-435-4873

The Kent Creek Line
ASI 54875

