

Dan O

Editorial
United Kingdom

View the full portfolio at <http://www.thecreativefinder.com/fernao90>

Professional Experience and Curriculum Vitae

Please kindly get in touch for more information.

Previous Clientele

Please kindly get in touch for more information.

Awards and Accolades

Please kindly get in touch for more information.

Awards and Accolades

Please kindly get in touch for more information.

Dan O

Editorial
United Kingdom

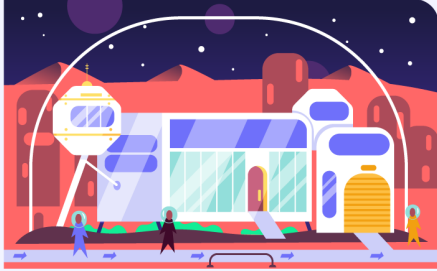
View the full portfolio at <http://www.thecreativefinder.com/fernao90>

View the full portfolio at <http://www.thecreativefinder.com/fernao90>

SELLING A HOUSE IN SPACE

3 BED DETACHED DOME HOUSE FOR SALE

£620,995



MARKETED BY:

CALL:
01103 700 000
[MORE DETAILS](#)

TRANSPORT

West Mars Space Station (3.2 miles)	Marston Rover Station (8.9 miles)
-------------------------------------	-----------------------------------

LISTING HISTORY
 FIRST LISTED: 2 MAY 2041
 VIEWS: 296

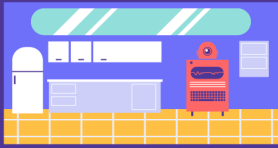
PROPERTY DESCRIPTION



Space and location, this property has it all, literally! This 3-bed wonder does not disappoint and is situated in the quickly growing, high demand area of Marston, West Mars. The property boasts many great amenities that make living here an outer world experience.



The living area is spacious, with a fantastic panoramic, sound and shatter proof wall window, providing a magical view of the lovely red landscape and flowing sands. Being heat resistant, the walls also provide optimum cooling and insulation during the morning and evening.



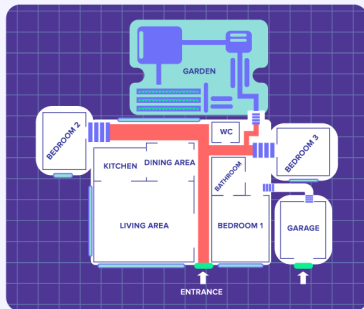
The kitchen comes with an inbuilt VIA (virtual intelligent assistant), meaning that cleaning, food ordering, recycling and cooking are done in a cinch. The newly constructed underground shuttle service means travel into the main city now takes less than 20 minutes.



Bedrooms come furnished with assisted gravity control, metal blinds, virtual windows and health scanners. The master bedroom also allows for a retractable glass roof although it is advised not to be used between 4am-3pm due to harsh atmosphere conditions.

ROOM SIZES

- ENTRANCE HALL
- LIVING AREA 21'3 X 17'2
- DINING AREA 9'2 X 8'4
- KITCHEN 11'4 X 7'6
- BEDROOM 1 (EN-SUITE) 14'1 X 12'5
- BEDROOM 2 11'4 X 10'7
- BEDROOM 3 12'5 X 9'3
- GROUND FLOOR WC
- FAMILY BATHROOM 8'2 X 7'1
- DOUBLE GARAGE
- GARDEN 29'2 X 19'8



*The information provided about this property does not constitute or form part of an offer or contract, nor may it be regarded as representations. All interested parties must verify accuracy including fixtures & fittings. All dimensions provided are estimates for floor plans, more details can be found on the spaceproperty.org site.

- [DOWNLOAD PROPERTY REPORT](#)
- [DOWNLOAD FLOOR PLAN](#)
- [ARRANGE A VIEWING](#)
- [CONTACT SPACE IN SPACE](#)

house network sworn to sell

View the full portfolio at <http://www.thecreativefinder.com/fernao90>

