

Emily Campbell

Fine Arts
United Kingdom

View the full portfolio at <http://www.thecreativefinder.com/emilyc>

Professional Experience and Curriculum Vitae

Through the use of photography my practice seeks to create a world that on the one hand is real and on the other - impossible. Using digital imaging, I effectively 'paint with photographs'. Each image is made up of many smaller photographs enabling me to create surreal and magical scenarios.

All the photographs I use I take myself, building my image library with each project. I have made work through out the UK, from Edinburgh to Plymouth which allows a multitude of different landscapes from which to choose. I am a firm believer of beauty in the world, next time you blow a bubble or notice the sun reflected in a raindrop, look longer and see what might be there

With a back ground in Fine Art I have been working as an artist in the private and public sector for over 20 years. I have a first class degree from Camberwell School of Art and a Masters from Chelsea School of Art and have exhibited internationally. More recently I have been expanding my practice to create images for licensing, clients include TTS Educational Catalogue and Twice as Nice Greeting Cards. I have extensive experience working to a brief and communicating with clients at a high level. My experience in teaching fine art has provided me with a very good understanding of the visual language, which I utilise to create ambitious, and thought provoking artworks.

To see more of Emily's work please visit
www.emilycampbell.co.uk

Previous Clientele

ITV 60 Minute Makeover
Madam Tussauds
Twice as Nice Greeting Cards
NHS Trusts
Squires Garden Centre
Gladstone Flooring
Schools

Awards and Accolades

EMILY CAMPBELL - CURRICULUM VITAE
Mobile: 07783796416
emily.campbell1@ntlworld.com
www.emilycampbell.co.uk

Qualifications

1991 - 1992 MA Alternative Media Chelsea School of Art, London.
1988 - 1991 B.A Hons (1st Class), Fine Art. Camberwell School of Art, London.
1987 - 1988 Art Foundation Norwich School of Art.

Private/Commercial Commissions

2012

15b Lloyd Road Singapore 239098 (co. reg. 201004398N)

• Twice as Nice Greeting Cards – A series of 12 greeting cards and images

• Madam Tussauds – Design for Floor of Shrek Room

• TTS Educational Catalogue - Designs for four products

Public Art Commissions

Emily Campbell

Fine Arts
United Kingdom

View the full portfolio at <http://www.thecreativefinder.com/emilyc>

Please kindly get in touch for portfolio works.

Without You I Would be Lost...



A Bespoke Vinyl Flooring for Selected Exhibition, Valencia University



Visual Illusions



A Bespoke Vinyl Floor for "Visual Illusions" Exhibition, Shire Hall Gallery.



Emily Campbell

Fine Arts
United Kingdom

View the full portfolio at <http://www.thecreativefinder.com/emilyc>

The Real Kitchen is Under the Entrance Hall



A Bespoke Floor Piece for Exhibition at The Oak House.



The Blue Butterfly Larvae Live Underground with the Ants....



A 10 x 10 m Solo Exhibition for the Potteries Museum and Art Gallery



Mosquito Night



A Bespoke Vinyl Floor for "Mosquito Night" Performance at Hereford Courtyard



Emily Campbell

Fine Arts
United Kingdom

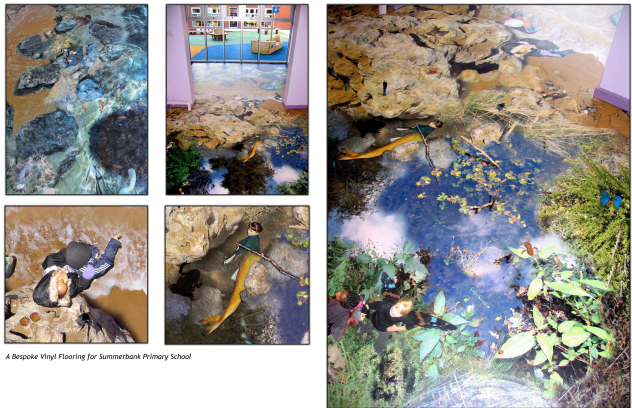
View the full portfolio at <http://www.thecreativefinder.com/emilyc>

Milton Keynes Dreaming



A Bespoke Vinyl Floor for Milton Keynes Gallery Young People's Music Festival

How Does Your Garden Grow?



A Bespoke Vinyl Flooring for Summerbank Primary School

Creature Carpet



A Bespoke Vinyl Floor for the 'Folly Gallery'.

Emily Campbell

Fine Arts
United Kingdom

View the full portfolio at <http://www.thecreativefinder.com/emilyc>

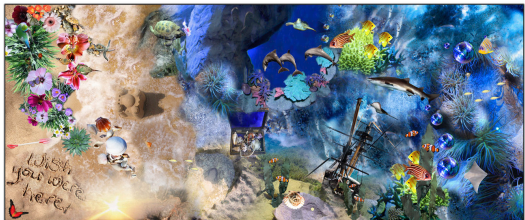
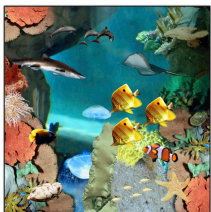
A Day by the Sea



Vinyl Ideas - Magical Meadow



Vinyl Ideas

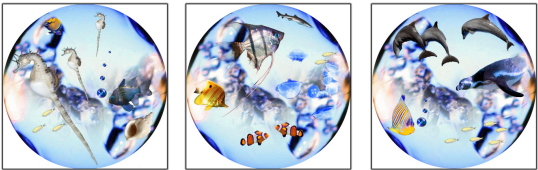


Emily Campbell

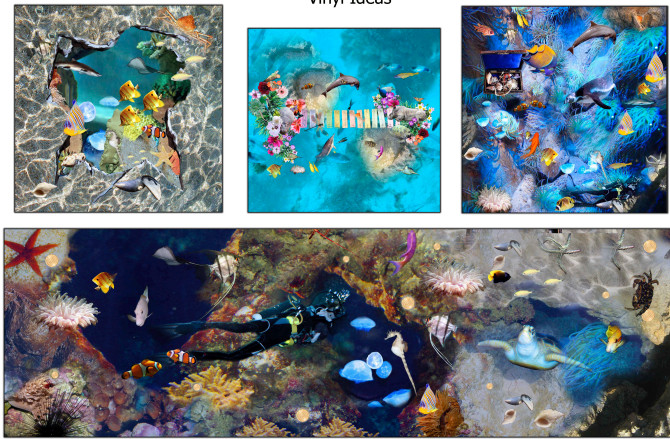
Fine Arts
United Kingdom

View the full portfolio at <http://www.thecreativefinder.com/emilyc>

Bespoke Vinyl Flooring for Contemporary Bathroom



Vinyl Ideas



Emily Campbell

Fine Arts
United Kingdom

View the full portfolio at <http://www.thecreativefinder.com/emilyc>

Cambridgeshire Moments



A series of 5 LED Lightboxes for The Dementia Ward at Fulbourn Hospital Cambridge

Enchanted Stoke on Trent

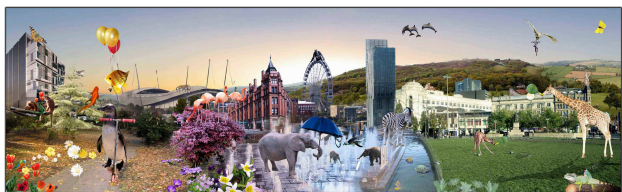


Images of the local area, incorporating games 'Spot the Difference' in the corridor.



Lead Artist for Stoke on Trent's Children's Hospital. Wall to Ceiling Images printed onto perspex, way finding and distraction bubbles.

Magical Manchester



A Series of Digital Images onto Perspex and Digiclad for Manchester Children's Hospital

15b Lloyd Road Singapore 239098 (co. reg. 201004398N)
helpdesk 656.227.2902, fax 656.227.0213

Emily Campbell

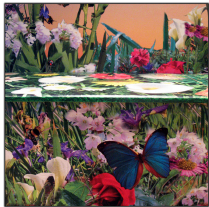
Fine Arts
United Kingdom

View the full portfolio at <http://www.thecreativefinder.com/emilyc>

Harplands Reflective Space



Photographic images onto perspex, with a programmable lighting system to give the effect of time passing.



Wooden seating and storage.

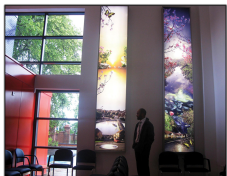


Children's Intensive Care Ceiling Tiles



120 cm x 180 cm Images for Ceiling Tiles Children's Intensive Care Ward Stoke on Trent (Due for installation October 2012)

Views from Westheath



A Series of 4 Lightboxes for Westheath Health Centre



Emily Campbell

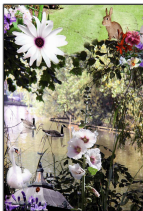
Fine Arts
United Kingdom

View the full portfolio at <http://www.thecreativefinder.com/emilyc>

Visions of Hartlepool



A Series of Four Light Boxes for Hartlepool Police Station.



Transitions

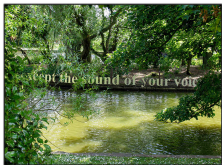
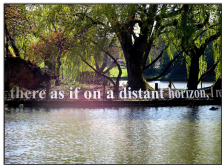


Two 3m x 1m digital prints onto perspex for Kings School, Wolverhampton

Love Ties



Quotes from Love Letters in Stainless Steel - A Major Public Art Work for Harlequin park.



Emily Campbell

Fine Arts
United Kingdom

View the full portfolio at <http://www.thecreativefinder.com/emilyc>

Beautiful Blackburn Moments



A 16 Meter Ceramic Print onto Glazing with 4 Internal Perspex Panels for Blackburn New Health Centre.

Magic Perry Common



A Series of Light Boxes and Bespoke Vinyl Flooring for Perry Common Health Centre

Visions of Home



A Vinyl Banner for Summerfield Primary Care Centre.