

BIGPIE STUDIO

Design Agency
1501 Main Street Ste 205
Venice Beach, CA 90291
United States

View the full portfolio at <http://www.thecreativefinder.com/bigpie>

Professional Experience and Curriculum Vitae

BIGPIE is an Interactive | Design Studio based in lovely Venice Beach, California.

A small company with BIG ideas.

We are a group of creatives, designers, and developers that bring a unique and passionate approach to web development and print design. We like to put ourselves in the shoes of our clients to ensure quality, timeliness, and friendly support.

We like to keep that smile on our clients' faces.

Contact Us
info@bigpie.tv

Previous Clientele

Production.VFX.Post

anvil films
attack ads
boxer films
charcoal films
concentrate content
detour films
emerging-filmmakers
envision media arts
first wave
fuse fx
la banda films
lab films
newhouse films
other films
saville productions
slim-pictures
sonzero films
umlaut films

Director. DP. Editor

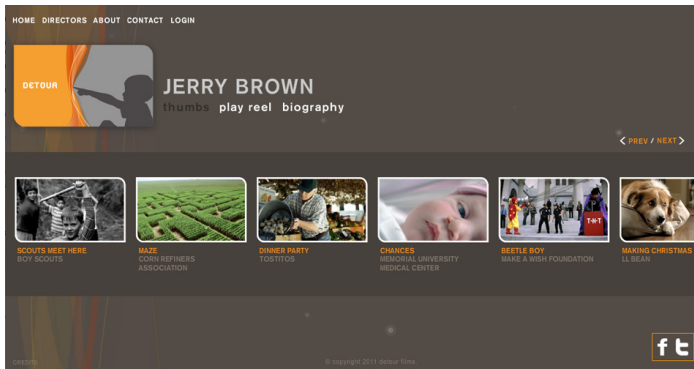
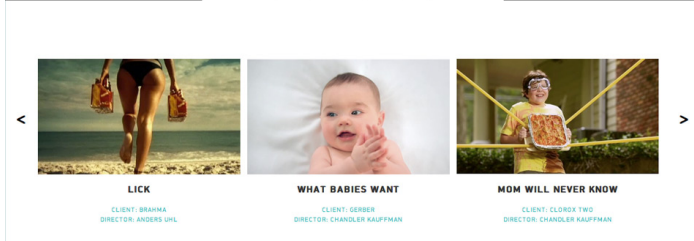
eric foster
jonathan zames
jordan mcmonagle
marco mazzei
michael shapiro
nicholas sheldon
sean hanish
Music.Sound
sean hanish
of mark
george benson
Special Biz

15b Lloyd Road Singapore 239098 (co. reg. 201004398N)
helpdesk 656.227.2902, fax 656.227.0213

BIGPIE STUDIO

Design Agency
1501 Main Street Ste 205
Venice Beach, CA 90291
United States

View the full portfolio at <http://www.thecreativefinder.com/bigpie>

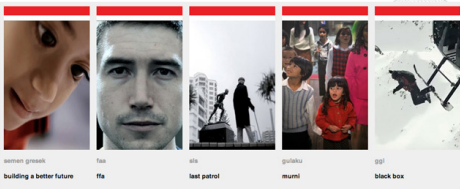


envision media arts

Mark Toia

territory -- us | ep@envisionma.com

biography

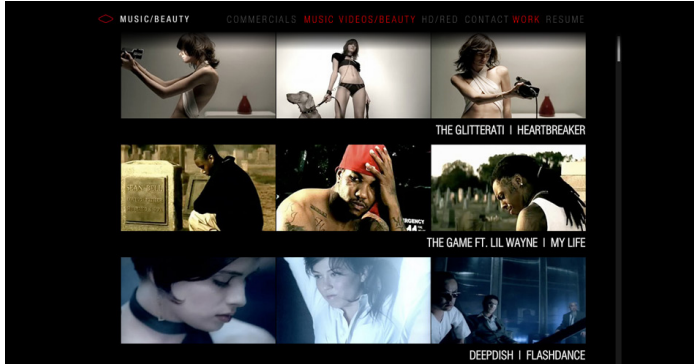


FULLSCREEN
NEWS
DIRECTORS
Andrew Becker
Martha Fieness
Jesse Jacobs
Marcus Nisgel
Yann Secouet
Mark Toia
FEATURE FILMS
produced
in production
TELEVISION
produced
in production
FINANCING
COMPANY
STAFF
CONTACT
LOGIN

BIGPIE STUDIO

Design Agency
1501 Main Street Ste 205
Venice Beach, CA 90291
United States

View the full portfolio at <http://www.thecreativefinder.com/bigpie>



MICHAEL SUGARMAN
[+ WIREDRIVE LINK](#)

GIVE-A-SHIT.ORG + GIVE A SHIT



ABOVE THE INFLUENCE + T-SHIRTS



THE ONION NEWS NETWORK + STABBING



LANDSEND + LIFECYCLE



[DIRECTORS](#) [EDITORS](#) [COMPOSERS](#) [DESIGN & ANIMATION](#) [INTERACTIVE](#) [NEWS](#) [ABOUT](#) [CONTACT](#) [LOGIN](#)



CLIENT LOGIN

[ABOUT](#)
[REELS](#)
[PRINCIPALS](#)
[NEWS](#)
[EMPLOYMENT](#)
[OUR CLIENTS](#)
[CONTACT](#)



"When we needed butterflies, bombs, the moon or the road... We had the best! Thank you for your endless creativity, energy and great attitude. I hope we get to work together again real soon!"

-Jeanne Van Cott

STILLS FROM OUR SHOW REEL



[VIEW REELS](#)

15b Lloyd Road Singapore 239098 (co. reg. 201004398N)
helpdesk 656.227.2902, fax 656.227.0213

BIGPIE STUDIO

Design Agency
1501 Main Street Ste 205
Venice Beach, CA 90291
United States

View the full portfolio at <http://www.thecreativefinder.com/bigpie>



TOUR DATES | STORE | NEWSLETTER | MUSIC | GALLERY | DISCOGRAPHY | CONTACT | BIOGRAPHY HOME

GEORGE BENSON

NEA Jazz Master & Guitar Legend

Biography

At various points along the four-decade continuum of George Benson's career, he has been heralded as a jazz guitarist of unparalleled chops, a vocalist with great emotional range and sophistication or a combination of both. However, he regards himself as an entertainer in the broadest sense of the word - a singer of songs, a spinner of tales. That's the essence, *Songs and Stories*.

"It's a very simple equation," the National Endowment of the Arts Jazz Master says of the longevity of his career and the ten Grammy Awards that have punctuated it along the way. "In the end, it's about the songs and the stories."

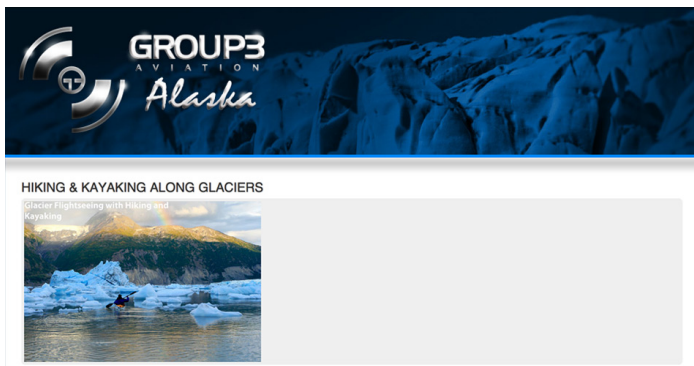
Photo Credit: Greg Allen

CLASSIC SKIN GB10 SKIN
JAZZ SKIN GB30 SKIN

RSS AMAZON ITUNES CONTACT

George Benson's NEA Jazz Masters V

BOSS GUITAR WES MONTGOMERY




GROUP3 AVIATION

Alaska

HIKING & KAYAKING ALONG GLACIERS

Glacier Hiking/Kayaking with Hiking and Kayaking



INDIE AERIALS

T 818.988.3362 | VIEW HTML SITE



Pause / Stop

VIDEO VERSION / QUICKTIME VERSION / 00:10 / 01:01

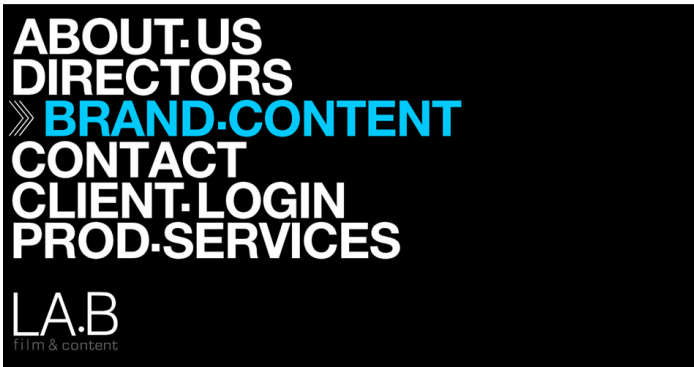
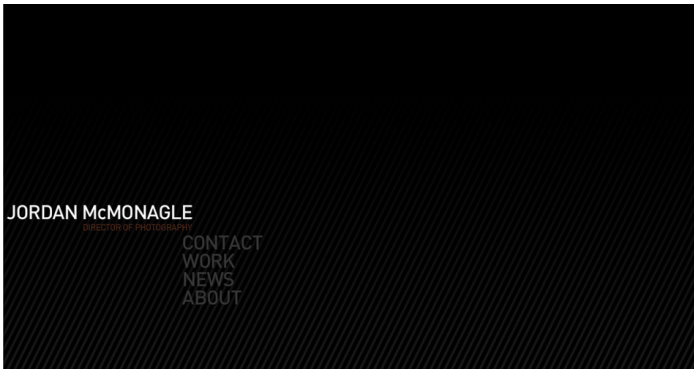
Home | About | Package | Rates | Reel | Contact

15b Lloyd Road Singapore 239098 (co. reg. 201004398N)
helpdesk 656.227.2902, fax 656.227.0213

BIGPIE STUDIO

Design Agency
1501 Main Street Ste 205
Venice Beach, CA 90291
United States

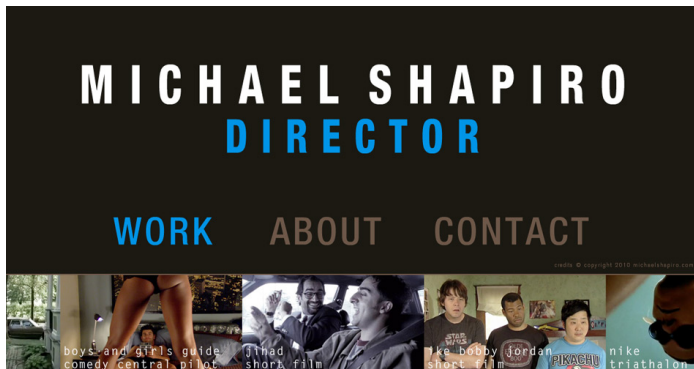
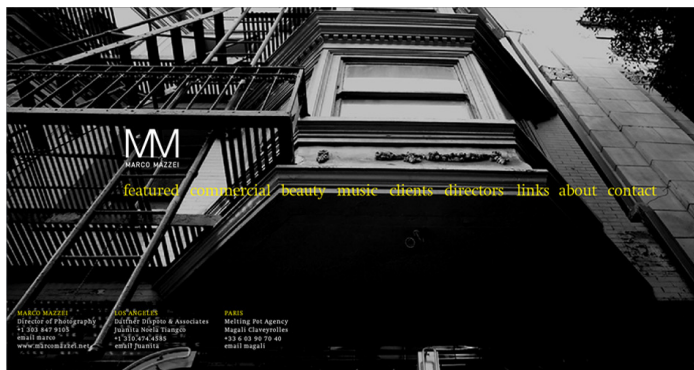
View the full portfolio at <http://www.thecreativefinder.com/bigpie>



BIGPIE STUDIO

Design Agency
1501 Main Street Ste 205
Venice Beach, CA 90291
United States

View the full portfolio at <http://www.thecreativefinder.com/bigpie>



15b Lloyd Road Singapore 239098 (co. reg. 201004398N)
helpdesk 656.227.2902, fax 656.227.0213

BIGPIE STUDIO

Design Agency
1501 Main Street Ste 205
Venice Beach, CA 90291
United States

View the full portfolio at <http://www.thecreativefinder.com/bigpie>



[directors](#) | [contact](#) | [home](#)

newhouse

© 2010 newhousefilms.com | 1722 whitely ave., la, 90028 t: 310.659.0010 f: 310.659.3105 | [contact us](#)

NICHOLAS SHELDON

ABOUT WORK CONTACT

NFL COMMERCIALS REALITY

MOJO (TRAILER)
TOM PETTY AND THE HEARTBREAKERS

APRIL IN PARIS
MAX CHAUOL, COUTURE

LINGERIE
BUDWEISER

01 | 07
[PREV](#) [NEXT](#)
MORE SPOTLIGHTS

SPOTLIGHT

THINK 7
FORCE
D-HIVE
CONTACT
NEWS
LOG-IN

PITCH
THINK OOH

NEW YORK FASHION WEEK

MAYBELLINE NEW YORK

SPONSORSHIP

The goal of the program was to create awareness of and buzz about Maybelline New York's Fashion Week. Sponsorship: The target was fashion-conscious women in New York City. One of the primary ways of achieving this goal was to include imagery of women using key Maybelline products.

'DINK' THE GOV IN LINCOLN CENTER AREA.

From a tactical perspective Maybelline did not simply want to have a dominant Out-of-Home presence near Lincoln Center, but also portray iconic Maybelline New York images in other areas of Manhattan where Fashion Week events were happening (Times Square, SoHo, etc.).

The Out-of-Home media ranged from wrapped double-decker buses to street furniture to buildings to subway station domination. The prominence and power of the imagery successfully transformed fashion beauty into makeup users that became Brand Evangelists by tweeting, on-tweeting, updating and blogging.

'DRESS' FOR SUCCESS?

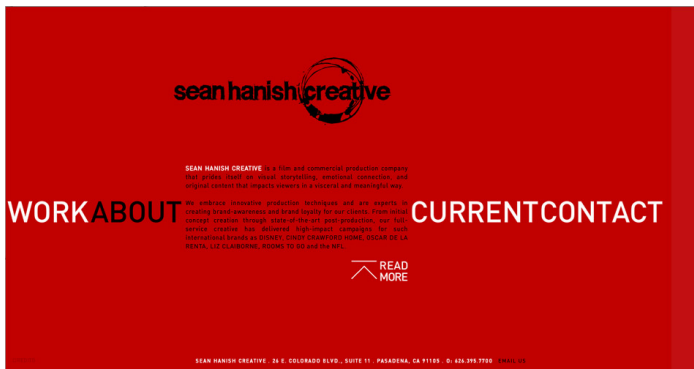
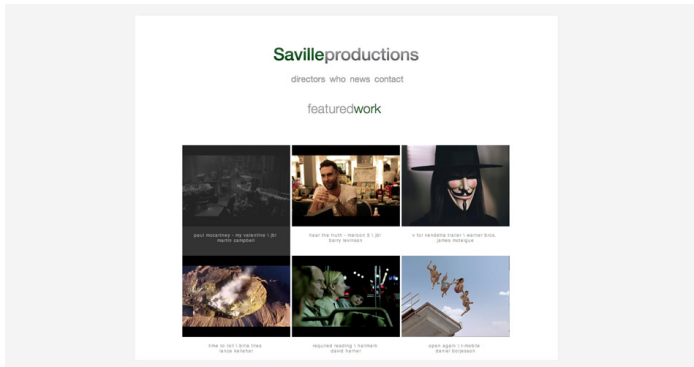
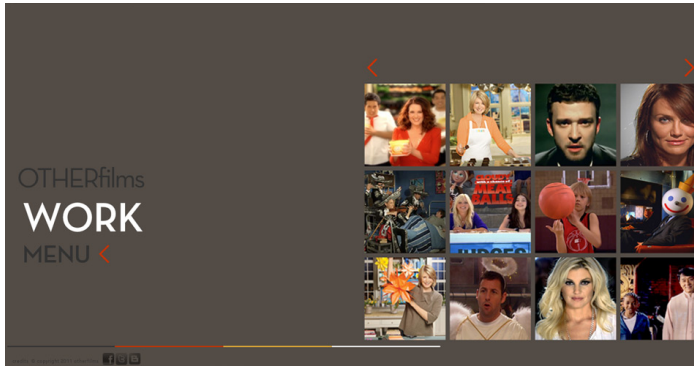
The overwhelming presence of the Out-of-Home signage successfully helped generate a brand awareness spike from 22% to 27% according to Nielsen Business Intelligence. Maybelline New York Fashion Week ads were popular and influenced positive sentiment. Discussion of the ads was frequent, as participants shared them on their blogs, boards and through Twitter.

© 2010 © Copyright 2011 eadpitch.com. All rights reserved. All content on this site can not be reproduced under any circumstances.

BIGPIE STUDIO

Design Agency
1501 Main Street Ste 205
Venice Beach, CA 90291
United States

View the full portfolio at <http://www.thecreativefinder.com/bigpie>

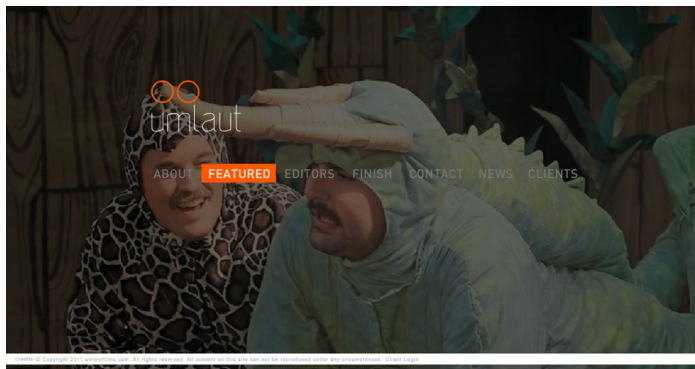
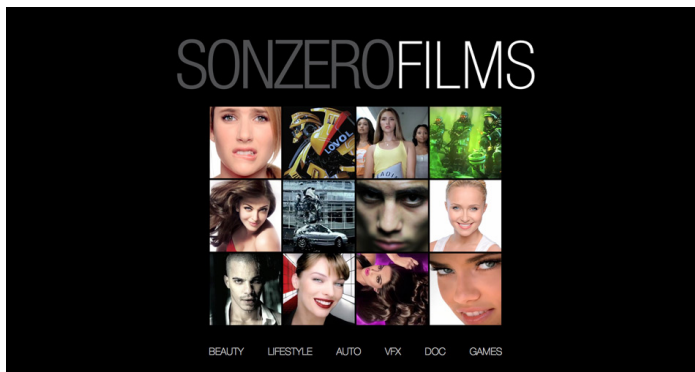
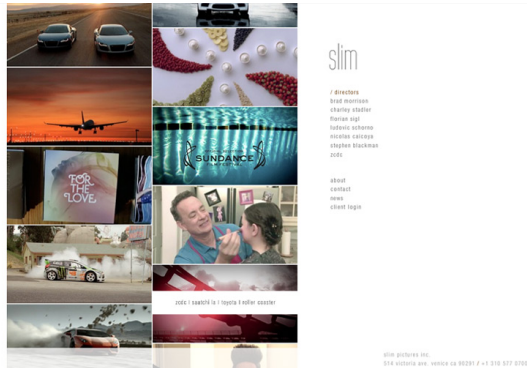


15b Lloyd Road Singapore 239098 (co. reg. 201004398N)
helpdesk 656.227.2902, fax 656.227.0213

BIGPIE STUDIO

Design Agency
1501 Main Street Ste 205
Venice Beach, CA 90291
United States

View the full portfolio at <http://www.thecreativefinder.com/bigpie>



BIGPIE STUDIO

Design Agency

1501 Main Street Ste 205

Venice Beach, CA 90291

United States

View the full portfolio at <http://www.thecreativefinder.com/bigpie>

U.S. PRODUCTION SERVICES

STAGE LOCATION INTERVIEWS ARCHIVES CLIENTS < NEWS ATTACKADS

STAGE SHOOTS

U.S. Production Services facilitates the needs of International Production Companies, Agencies and Networks filming anywhere in America. Our Producers have worked hundreds of clients throughout the United States and internationally, on everything from small single camera interviews to multi-city, multi-media, large campaigns. We can handle any size production filmed anywhere in the United States.

OUR PRODUCTION SERVICES INCLUDE:

- Billing and Budgeting
- Casting, SAG and Non-Union
- Securing Celebrity Talent
- Scheduling and Securing Locations
- Stunts & Special Effects
- Insurance Coverage & Workers' Comp
- Post Services
- Reservations Where to Shoot, Eat, Stay

WE CAN FACILITATE YOUR PRODUCTION NEEDS:
From Day & 10 to 10mins & 30mins
From Remote Locations to Stage Shoots
From Hotels to Houses and Guest to Cases

CONTACT US
375 Washington Blvd #524
Marina Del Rey, CA 90262
P: US +1 310 817 7780
P: UK +44 (0)207 862 4200
> Roberts Jones > Director Jones

THE SECRET LIFE OF THE AMERICAN TEENAGER
KAREN FILM / MTV EUROPE
BY: MARTO ROMFANO
NOTE: CLIENT PROD. TOMMASO PELLICCI
LOC: LOS ANGELES

FILM: CAFE
FILM
BY: ANTHONY
NOTE: STAFF: PING, BIAN, LEE
CLIENT PROD. JOYCE LUN
LOC: LOS ANGELES

JAMES' ITALIAN ESCAPE
CHANNEL 4
BY: LUCY ELLIOTT
NOTE: TALENT: TALENT, JANE PEE
CLIENT PROD. GIANFRANCO LAZZI
LOC: LOS ANGELES

UFC
VISION MEDIA
BY: JAMES PEARSON
CLIENT PROD. GIANFRANCO LAZZI

U.S. PRODUCTION SERVICES
ALTA
A&S INC

15b Lloyd Road Singapore 239098 (co. reg. 201004398N)
helpdesk 656.227.2902, fax 656.227.0213