

# Anna and Elena Balbusso Twins

## Illustration

REP: Shannon Associates LLC - New York  
333 West 57th Street, Suite 809, New York, NY 10019  
info@shannonassociates.com , 212.333.2551  
Italy

View the full portfolio at [http://www.thecreativefinder.com/balbusso\\_twins](http://www.thecreativefinder.com/balbusso_twins)

## Professional Experience and Curriculum Vitae

MILANO - NEW YORK

U.S. Rep: Shannon Associates New York  
[www.shannonassociates.com/artist/balbusso](http://www.shannonassociates.com/artist/balbusso)  
Stock re-uses: [www.theispot.com](http://www.theispot.com)

ANNA AND ELENA BALBUSSO, also known as the Balbusso Twins, are an international recognised award-winning Italian artist duo living in Milan. Their work has been published by major international publishers and companies through out the world on various media. They've illustrated more than 50 illustrated books, including the luxury limited edition of The Great Gatsby for Beehive Books, the deluxe Folio Society editions of The Handmaid's Tale, Pride and Prejudice, and Atlas Shrugged. Their work has been featured in numerous publications, including The Economist, The New Yorker, The New York Times, The New York Times Book review, Reader's Digest, and Corriere Della Sera. In their career they received more than 90 international honors & awards, including three Gold medals, a Silver medal and the Stevan Dohanos Award from the prestigious Society of Illustrators, as well as two Joseph Morgan Henninger Awards and a Silver of the SILA of Los Angeles; a Gold and two silver Awards of 3x3 The Magazine of Contemporary Illustration; the Victoria and Albert Museum Illustration Awards Best Book and a Graphis Silver Award. The Norman Rockwell Museum has included Balbusso Twins in the illustration history among the illustrators of The Decade 2010. T Follow them on @balbusso\_twins

## Previous Clientele

Please kindly get in touch for more information.

## Awards and Accolades

Please kindly get in touch for more information.

## Awards and Accolades

2023 American Illustration 42 SELECTED  
Winner, Annual Book and web ARCHIVE – AI-AP's, USA  
2023 CA's Award of Excellence Illustration  
Annual 64, Communication Arts Magazine, USA  
2023 "Illustrators 65" selection Annual book and  
Exhibit, Society of Illustrators, New York, USA  
2022 Graphis Silver Award and Honorable  
Mention International Designers for Peace  
competition  
2022 Merit Award 3x3 Show No.19  
2022 WIA World Illustration Awards shortlisted,  
The AOI, Directory of Illustrators, UK  
2022 Selected The Braw amazing bookshelf -  
Me+Tree 100 among amazing books, Bologna  
children's book fair 59th edition

2021 American Illustration 41 SELECTED  
Winner, Annual Book and web ARCHIVE – AI-AP's, USA

Rob Lloyd Read Singapore 239098 (co. reg. 201004398N)  
helpdesk 656.227.2902, fax 656.227.0213

# Anna and Elena Balbusso Twins

Illustration

REP: Shannon Associates LLC - New York  
333 West 57th Street, Suite 809, New York, NY 10019  
info@shannonassociates.com , 212.333.2551  
Italy

View the full portfolio at <http://www.thecreativefinder.com/balbusso twins>

Please kindly get in touch for portfolio works.



# Anna and Elena Balbusso Twins

Illustration

REP: Shannon Associates LLC - New York

333 West 57th Street, Suite 809, New York, NY 10019

info@shannonassociates.com , 212.333.2551

Italy

View the full portfolio at <http://www.thecreativefinder.com/balbusso twins>



15b Lloyd Road Singapore 239098 (co. reg. 201004398N)  
helpdesk 656.227.2902, fax 656.227.0213

# Anna and Elena Balbusso Twins

Illustration

REP: Shannon Associates LLC - New York

333 West 57th Street, Suite 809, New York, NY 10019

info@shannonassociates.com , 212.333.2551

Italy

View the full portfolio at <http://www.thecreativefinder.com/balbusso twins>



15b Lloyd Road Singapore 239098 (co. reg. 201004398N)  
helpdesk 656.227.2902, fax 656.227.0213

# Anna and Elena Balbusso Twins

Illustration

REP: Shannon Associates LLC - New York  
333 West 57th Street, Suite 809, New York, NY 10019  
info@shannonassociates.com , 212.333.2551  
Italy

View the full portfolio at <http://www.thecreativefinder.com/balbusso twins>



15b Lloyd Road Singapore 239098 (co. reg. 201004398N)  
helpdesk 656.227.2902, fax 656.227.0213

# Anna and Elena Balbusso Twins

Illustration

REP: Shannon Associates LLC - New York

333 West 57th Street, Suite 809, New York, NY 10019

info@shannonassociates.com , 212.333.2551

Italy

View the full portfolio at <http://www.thecreativefinder.com/balbusso twins>



# Anna and Elena Balbusso Twins

Illustration

REP: Shannon Associates LLC - New York

333 West 57th Street, Suite 809, New York, NY 10019

info@shannonassociates.com , 212.333.2551

Italy

View the full portfolio at <http://www.thecreativefinder.com/balbusso twins>



# Anna and Elena Balbusso Twins

Illustration

REP: Shannon Associates LLC - New York  
333 West 57th Street, Suite 809, New York, NY 10019  
info@shannonassociates.com , 212.333.2551  
Italy

View the full portfolio at <http://www.thecreativefinder.com/balbusso twins>





# Anna and Elena Balbusso Twins

Illustration

REP: Shannon Associates LLC - New York  
333 West 57th Street, Suite 809, New York, NY 10019  
info@shannonassociates.com , 212.333.2551  
Italy

View the full portfolio at <http://www.thecreativefinder.com/balbusso twins>



# Anna and Elena Balbusso Twins

Illustration

REP: Shannon Associates LLC - New York  
333 West 57th Street, Suite 809, New York, NY 10019  
info@shannonassociates.com , 212.333.2551  
Italy

View the full portfolio at <http://www.thecreativefinder.com/balbusso twins>



# Anna and Elena Balbusso Twins

Illustration

REP: Shannon Associates LLC - New York

333 West 57th Street, Suite 809, New York, NY 10019

info@shannonassociates.com , 212.333.2551

Italy

View the full portfolio at <http://www.thecreativefinder.com/balbusso twins>



# Anna and Elena Balbusso Twins

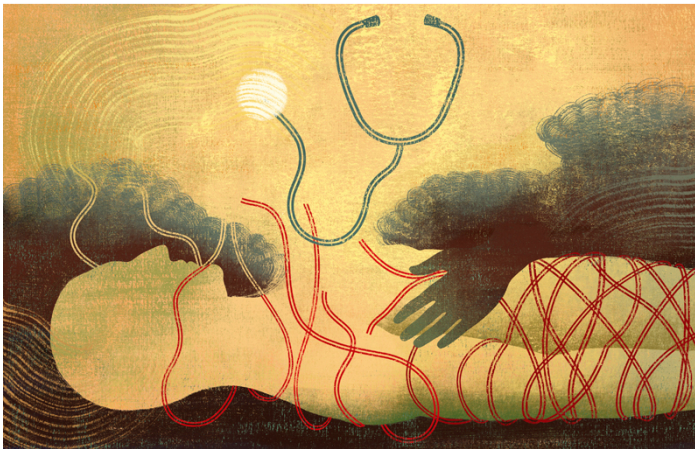
Illustration

REP: Shannon Associates LLC - New York  
333 West 57th Street, Suite 809, New York, NY 10019  
info@shannonassociates.com , 212.333.2551  
Italy

View the full portfolio at <http://www.thecreativefinder.com/balbusso twins>



The New York Times **Sunday Review** | The Opinion Pages



15b Lloyd Road Singapore 239098 (co. reg. 201004398N)  
helpdesk 656.227.2902, fax 656.227.0213

# Anna and Elena Balbusso Twins

Illustration

REP: Shannon Associates LLC - New York

333 West 57th Street, Suite 809, New York, NY 10019

info@shannonassociates.com , 212.333.2551

Italy

View the full portfolio at <http://www.thecreativefinder.com/balbusso twins>



# Anna and Elena Balbusso Twins

Illustration

REP: Shannon Associates LLC - New York

333 West 57th Street, Suite 809, New York, NY 10019

info@shannonassociates.com , 212.333.2551

Italy

View the full portfolio at <http://www.thecreativefinder.com/balbusso twins>



# Anna and Elena Balbusso Twins

Illustration

REP: Shannon Associates LLC - New York  
333 West 57th Street, Suite 809, New York, NY 10019  
info@shannonassociates.com , 212.333.2551  
Italy

View the full portfolio at <http://www.thecreativefinder.com/balbusso twins>



15b Lloyd Road Singapore 239098 (co. reg. 201004398N)  
helpdesk 656.227.2902, fax 656.227.0213

# Anna and Elena Balbusso Twins

Illustration

REP: Shannon Associates LLC - New York

333 West 57th Street, Suite 809, New York, NY 10019

info@shannonassociates.com , 212.333.2551

Italy

View the full portfolio at <http://www.thecreativefinder.com/balbusso twins>



15b Lloyd Road Singapore 239098 (co. reg. 201004398N)  
helpdesk 656.227.2902, fax 656.227.0213



# Anna and Elena Balbusso Twins

Illustration

REP: Shannon Associates LLC - New York  
333 West 57th Street, Suite 809, New York, NY 10019  
info@shannonassociates.com , 212.333.2551  
Italy

View the full portfolio at <http://www.thecreativefinder.com/balbusso twins>



15b Lloyd Road Singapore 239098 (co. reg. 201004398N)  
helpdesk 656.227.2902, fax 656.227.0213

# Anna and Elena Balbusso Twins

Illustration

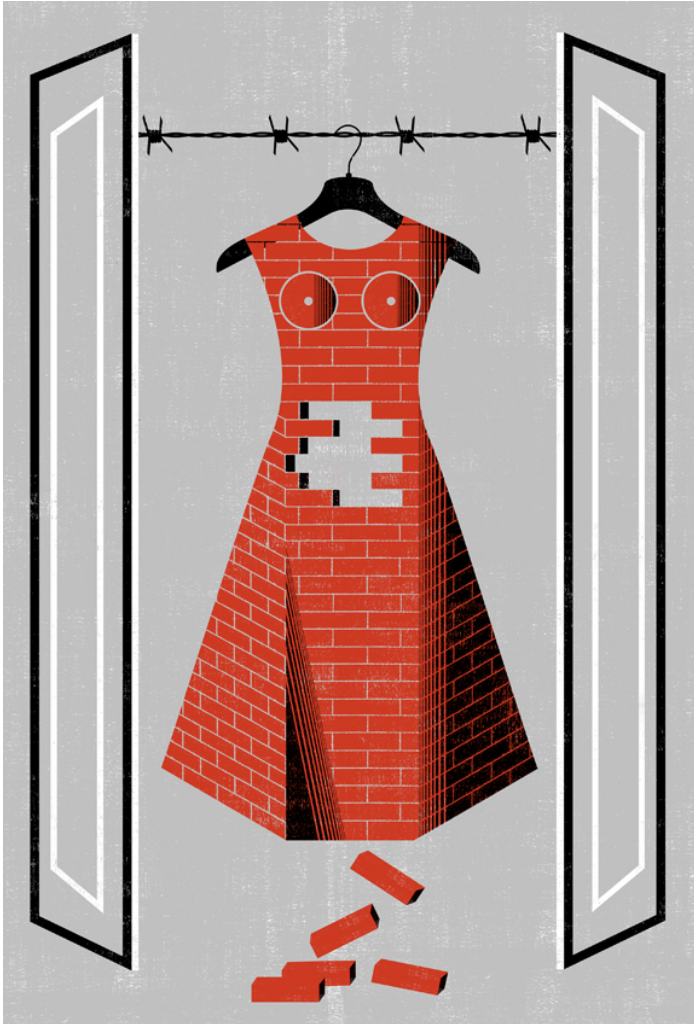
REP: Shannon Associates LLC - New York

333 West 57th Street, Suite 809, New York, NY 10019

info@shannonassociates.com , 212.333.2551

Italy

View the full portfolio at <http://www.thecreativefinder.com/balbusso twins>



# Anna and Elena Balbusso Twins

Illustration

REP: Shannon Associates LLC - New York  
333 West 57th Street, Suite 809, New York, NY 10019  
info@shannonassociates.com , 212.333.2551  
Italy

View the full portfolio at <http://www.thecreativefinder.com/balbusso twins>



15b Lloyd Road Singapore 239098 (co. reg. 201004398N)  
helpdesk 656.227.2902, fax 656.227.0213

# Anna and Elena Balbusso Twins

Illustration

REP: Shannon Associates LLC - New York  
333 West 57th Street, Suite 809, New York, NY 10019  
info@shannonassociates.com , 212.333.2551  
Italy

View the full portfolio at <http://www.thecreativefinder.com/balbusso twins>



# Anna and Elena Balbusso Twins

Illustration

REP: Shannon Associates LLC - New York  
333 West 57th Street, Suite 809, New York, NY 10019  
info@shannonassociates.com , 212.333.2551  
Italy

View the full portfolio at <http://www.thecreativefinder.com/balbusso twins>



# Anna and Elena Balbusso Twins

Illustration

REP: Shannon Associates LLC - New York  
333 West 57th Street, Suite 809, New York, NY 10019  
info@shannonassociates.com , 212.333.2551  
Italy

View the full portfolio at <http://www.thecreativefinder.com/balbusso twins>



15b Lloyd Road Singapore 239098 (co. reg. 201004398N)  
helpdesk 656.227.2902, fax 656.227.0213