

# Arlen Schumer

Fine Arts

1835 post road east #9

westport, CT 06880

United States

View the full portfolio at <http://www.thecreativefinder.com/arlenschumer>

## Professional Experience and Curriculum Vitae

Arlen Schumer has been creating award-winning comic book-styled illustrations for the advertising and editorial markets for over 25 years ([www.arlenschumer.com](http://www.arlenschumer.com)), and is one of the foremost historians of comic book art—Comic Book Artist magazine named him "one of the more articulate and enthusiastic advocates of comic book art in America," and his coffeetable art book *The Silver Age of Comic Book Art* won the Independent Book Publishers award for Best Popular Culture Book of 2003. His other books are *Visions from The Twilight Zone* (Chronicle Books, 1991) and *The Neal Adams Sketchbook* (Vanguard, 1999), and he has lectured on American Popular Culture at universities and cultural institutions since 1988.

## Previous Clientele

Unilever, Hewlett-Packard, ABC-TV, Oprah Magazine, The Washington Post, Whiteglove Healthcare, Online Media, Marketing & Advertising magazine.

## Awards and Accolades

### Professional Profile

Over 25 years experience in art direction, copywriting and graphic design, as well as running own illustration studio.

Have also written articles for the trade, and lectured and performed multimedia slide shows on art and popular culture at universities and cultural institutions around the country.

### Experience and Accomplishments

2004-2005 Creative Director, Charlex, New York, NY

Oversaw animatic test commercial production; interfaced with artists, computer editors and ad agencies.

2003 Wrote, edited and designed *The Silver Age of Comic Book Art*

Published by Collectors Press, Portland, Oregon ([www.collectorspress.com](http://www.collectorspress.com))

Coffeetable book about eight legendary comic book artists and how their work in the 1960s ("The Silver

Age") reflected not only the changes within the medium, but in American society as well.

Winner of The

Independent Book Publishers Award for Best Pop Culture Book of 2003.

2000-2002 Art Director/Copywriter, The Ad Store, New York, NY

Art directing, designing, and copywriting on a variety of accounts, including Reynolds, Alitalia and

Hypnotic.com, a website showing short films.

1997-2000 Art Director/Copywriter, Messner Vetere Berger McNamee Schmetterer, New York, NY

Wrote and art directed a series of 30-second TV spots for MCI accounts.

Responsibilities included casting,

choosing directors, working with production houses, overseeing off- and online editing, and music

production. Art directed collateral print. 15b Lloyd Road Singapore 239098 (co. reg. 201004398N)

helpdesk 656.227.2902, fax 656.227.0213

WWW.THECREATIVEFINDER 1999# Conceived, edited and designed *Visions From The Twilight Zone*

Published by Chronicle Books, San Francisco

Coffeetable book that combined images from the classic TV series designed as black

# Arlen Schumer

Fine Arts

1835 post road east #9

westport, CT 06880

United States

View the full portfolio at <http://www.thecreativefinder.com/arlenschumer>

Please kindly get in touch for portfolio works.



# Arlen Schumer

Fine Arts

1835 post road east #9

westport, CT 06880

United States

View the full portfolio at <http://www.thecreativefinder.com/arlenschumer>



15b Lloyd Road Singapore 239098 (co. reg. 201004398N)  
helpdesk 656.227.2902, fax 656.227.0213

# Arlen Schumer

Fine Arts

1835 post road east #9

westport, CT 06880

United States

View the full portfolio at <http://www.thecreativefinder.com/arlenschumer>



15b Lloyd Road Singapore 239098 (co. reg. 201004398N)  
helpdesk 656.227.2902, fax 656.227.0213



# Arlen Schumer

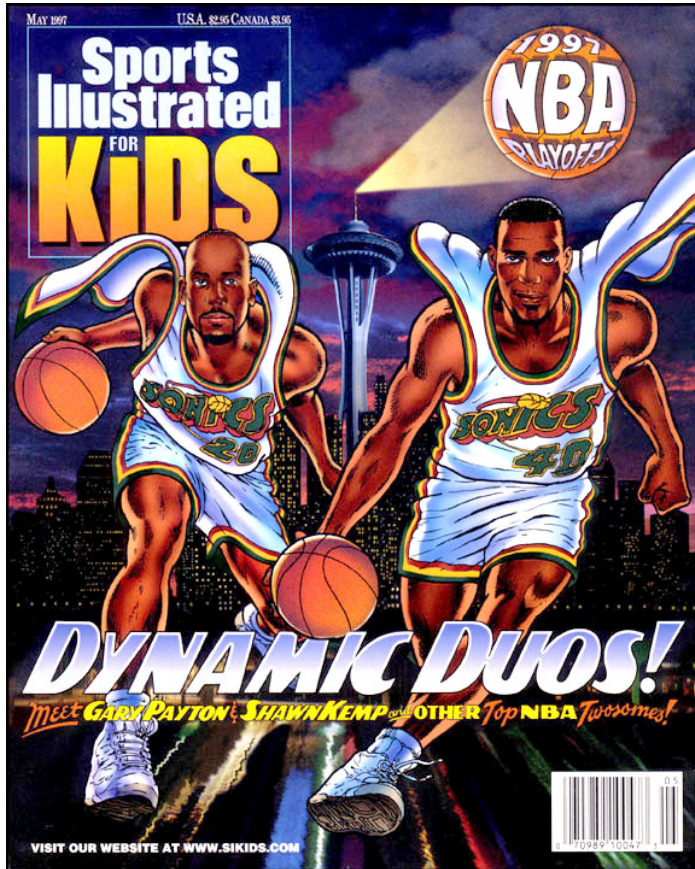
Fine Arts

1835 post road east #9

westport, CT 06880

United States

View the full portfolio at <http://www.thecreativefinder.com/arlenschumer>



15b Lloyd Road Singapore 239098 (co. reg. 201004398N)  
helpdesk 656.227.2902, fax 656.227.0213

# Arlen Schumer

Fine Arts

1835 post road east #9

westport, CT 06880

United States

View the full portfolio at <http://www.thecreativefinder.com/arlenschumer>



15b Lloyd Road Singapore 239098 (co. reg. 201004398N)  
helpdesk 656.227.2902, fax 656.227.0213

# Arlen Schumer

Fine Arts

1835 post road east #9

westport, CT 06880

United States

View the full portfolio at <http://www.thecreativefinder.com/arlenschumer>





# Arlen Schumer

Fine Arts

1835 post road east #9

westport, CT 06880

United States

View the full portfolio at <http://www.thecreativefinder.com/arlenschumer>



15b Lloyd Road Singapore 239098 (co. reg. 201004398N)  
helpdesk 656.227.2902, fax 656.227.0213

# Arlen Schumer

Fine Arts

1835 post road east #9

westport, CT 06880

United States

View the full portfolio at <http://www.thecreativefinder.com/arlenschumer>





# Arlen Schumer

Fine Arts

1835 post road east #9

westport, CT 06880

United States

View the full portfolio at <http://www.thecreativefinder.com/arlenschumer>



# Arlen Schumer

Fine Arts

1835 post road east #9

westport, CT 06880

United States

View the full portfolio at <http://www.thecreativefinder.com/arlenschumer>



15b Lloyd Road Singapore 239098 (co. reg. 201004398N)  
helpdesk 656.227.2902, fax 656.227.0213

# Arlen Schumer

Fine Arts

1835 post road east #9

westport, CT 06880

United States

View the full portfolio at <http://www.thecreativefinder.com/arlenschumer>



15b Lloyd Road Singapore 239098 (co. reg. 201004398N)  
helpdesk 656.227.2902, fax 656.227.0213



# Arlen Schumer

Fine Arts

1835 post road east #9

westport, CT 06880

United States

View the full portfolio at <http://www.thecreativefinder.com/arlenschumer>



# Arlen Schumer

Fine Arts

1835 post road east #9

westport, CT 06880

United States

View the full portfolio at <http://www.thecreativefinder.com/arlenschumer>



15b Lloyd Road Singapore 239098 (co. reg. 201004398N)  
helpdesk 656.227.2902, fax 656.227.0213



# Arlen Schumer

Fine Arts

1835 post road east #9

westport, CT 06880

United States

View the full portfolio at <http://www.thecreativefinder.com/arlenschumer>



15b Lloyd Road Singapore 239098 (co. reg. 201004398N)  
helpdesk 656.227.2902, fax 656.227.0213

# Arlen Schumer

Fine Arts

1835 post road east #9

westport, CT 06880

United States

View the full portfolio at <http://www.thecreativefinder.com/arlenschumer>



15b Lloyd Road Singapore 239098 (co. reg. 201004398N)  
helpdesk 656.227.2902, fax 656.227.0213

# Arlen Schumer

Fine Arts

1835 post road east #9

westport, CT 06880

United States

View the full portfolio at <http://www.thecreativefinder.com/arlenschumer>





# Arlen Schumer

Fine Arts

1835 post road east #9

westport, CT 06880

United States

View the full portfolio at <http://www.thecreativefinder.com/arlenschumer>



15b Lloyd Road Singapore 239098 (co. reg. 201004398N)  
helpdesk 656.227.2902, fax 656.227.0213

# Arlen Schumer

Fine Arts

1835 post road east #9

westport, CT 06880

United States

View the full portfolio at <http://www.thecreativefinder.com/arlenschumer>



15b Lloyd Road Singapore 239098 (co. reg. 201004398N)  
helpdesk 656.227.2902, fax 656.227.0213



# Arlen Schumer

Fine Arts

1835 post road east #9

westport, CT 06880

United States

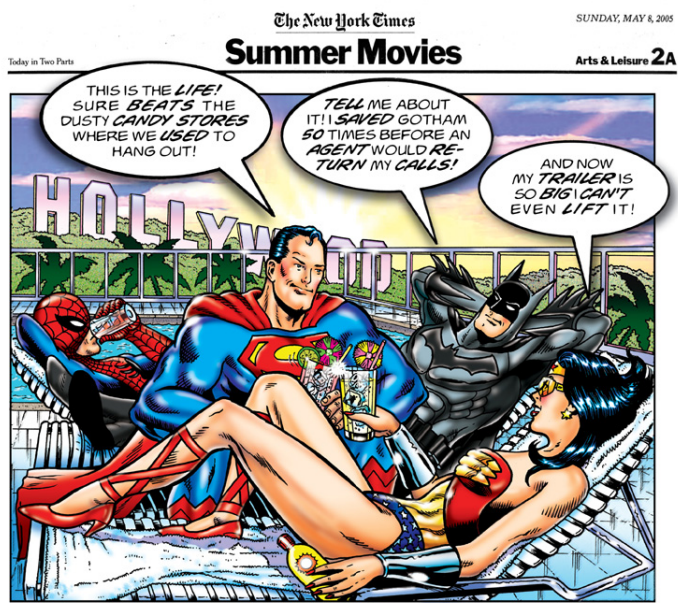
View the full portfolio at <http://www.thecreativefinder.com/arlenschumer>



# Arlen Schumer

Fine Arts  
1835 post road east #9  
westport, CT 06880  
United States

View the full portfolio at <http://www.thecreativefinder.com/arlenschumer>



# Arlen Schumer

Fine Arts

1835 post road east #9

westport, CT 06880

United States

View the full portfolio at <http://www.thecreativefinder.com/arlenschumer>





# Arlen Schumer

Fine Arts

1835 post road east #9

westport, CT 06880

United States

View the full portfolio at <http://www.thecreativefinder.com/arlenschumer>

