

Amy Nasser

Photography
United States

View the full portfolio at <http://www.thecreativefinder.com/amynnasser>

Professional Experience and Curriculum Vitae

Visit www.AmyNasser.com and Studios.AmyNasser.com for Latest Updates

•|• Please Note: All Photography © Amy Nasser Photographer. Images may not be copied, reproduced, manipulated or used in any manner without explicit written permission. All Images on this website are Intellectual Property protected by U.S., Canada, France and International Copyright Laws. All Rights Reserved. No Creative Commons or Derivative Use Permitted. Image Theft Protected by PIXSY • Inquiries Please eMail - Studio <@> AmyNasser.com •|•

Amy Nasser is a critically acclaimed international fashion, architecture, and erotica photographer, and has for the past 30 plus years, traveled the world photographing celebrities and other high profile people, shooting major advertising campaigns, and national landmark architecture.

His current accolades and prizes include LUMAS Galleries worldwide including LUMAS Art Basel, LUMAS UAE, LUMAS Saudi Arabia, LUMAS Vancouver, LUMAS Toronto, and Moscow International Foto Awards 2 years in a row. Amy has also been an Architecture Award Winner and Fine Art Nude 2 years in a row.

He has photographed Covers and Fashion Editorial stories for world renowned magazines such as Vogue, Harper's Bazaar, Elle, Cosmopolitan, Marie Claire, Glamour, L'Officiel, Men's Vogue, GQ, Rolling Stone, Max, Prestige International, Guest Informant, International Guide, Esquire, Brides, Clic, Amica and more in France, Italy, Germany, Japan, Canada, and United States.

He is the exclusive west coast photographer for Prestige International Magazine Paris, shooting covers and 90 pages of fashion and architecture pages per issue. Each photography production team includes models, celebrities, hair, makeup, stylists, assistants, videographers, production, post production, and set decorators.

Amongst the celebrities Amy has photographed are Rob Lowe, Jeff Goldblum, Prince, Sheila E., Iman, Claudia Schiffer, Carmen Electra, Carla Bruni, Carl Lewis, Jon Secada, Helena Christensen, Jean-Paul Goude, The Jackson Family, Wayne Gretzky, Claude Montana, Eva Herzigova, Sandrine Bonnaire, Sophie Marceau, Veronica Ferres, Susie Abromeit, Bria Murphy, Donovan Leitch and more.

Amongst the landmark architecture he has photographed is the James F Goldstein residence in Los Angeles, California, which will be part of the Los Angeles County Museum of Art collection of historic properties. He has also photographed one the exclusive stretches of beach in Malibu, a Frank Gehry-designed estate, worth \$57.5 million for an exclusive fashion and architecture production. The 11,413 square-foot house with Gehry's asymmetrical style is a unique mid-century modern architecture. In addition, Amy has photographed a Morbras Meeting Point in Roissy-en-Brie, France designed by world famous landscape architect Kathryn Gustafson.

He consistent exemplary work keeps him in the company with the most influential photographers worldwide. His work is always ahead of its time, and he is a pioneer in the field of image coloration. It is reminiscent of the early 60's artists, and has made a comeback to the world of photography because of Amy's secret formula in photo editing and photoshop utilizing a cinematic technique that no one else has. His 10 feet wide architecture photos were the first to be printed on high grade luxury super gloss aluminum.

He has a singular ability to tell a story thru his eyes that will last much into the future as

Amyn Nasser

Photography
United States

View the full portfolio at <http://www.thecreativefinder.com/amynnasser>

Please kindly get in touch for portfolio works.

Please kindly get in touch for portfolio works.

Please kindly get in touch for portfolio works.

Please kindly get in touch for portfolio works.

Please kindly get in touch for portfolio works.

Please kindly get in touch for portfolio works.

Please kindly get in touch for portfolio works.

Please kindly get in touch for portfolio works.

Please kindly get in touch for portfolio works.

Please kindly get in touch for portfolio works.

Please kindly get in touch for portfolio works.

Please kindly get in touch for portfolio works.

Please kindly get in touch for portfolio works.

Please kindly get in touch for portfolio works.

Please kindly get in touch for portfolio works.

Please kindly get in touch for portfolio works.

Please kindly get in touch for portfolio works.

Please kindly get in touch for portfolio works.

Please kindly get in touch for portfolio works.

Please kindly get in touch for portfolio works.

Please kindly get in touch for portfolio works.

Please kindly get in touch for portfolio works.

Please kindly get in touch for portfolio works.

Please kindly get in touch for portfolio works.

Please kindly get in touch for portfolio works.

Please kindly get in touch for portfolio works.

Please kindly get in touch for portfolio works.

Please kindly get in touch for portfolio works.

Please kindly get in touch for portfolio works.

Please kindly get in touch for portfolio works.

Please kindly get in touch for portfolio works.

Amy Nasser

Photography
United States

View the full portfolio at <http://www.thecreativefinder.com/amynasser>



15b Lloyd Road Singapore 239098 (co. reg. 201004398N)
helpdesk 656.227.2902, fax 656.227.0213

Amy Nasser

Photography
United States

View the full portfolio at <http://www.thecreativefinder.com/amynasser>



Lavina / Skin and Foundation: Orlane Seram, Orlane Moisturizer, Foundation, Highlighter & Bronzer; Senna S
Eyes/ Lip: Senna Brow Book; Make Up For Ever Aqua Cream Aqua Liner; Aqua Eyes & Senna Cream Lipst
Makeup (MUA) Senna Grette, Senna Borch, Wang Bo at a Bridal Studio
Hair: Hair Combination of different mud masks & Make Up For Ever Hair Powder
Jewels: JOBANNON

15b Lloyd Road Singapore 239098 (co. reg. 201004398N)
helpdesk 656.227.2902, fax 656.227.0213

Amy Nasser

Photography
United States

View the full portfolio at <http://www.thecreativefinder.com/amynasser>

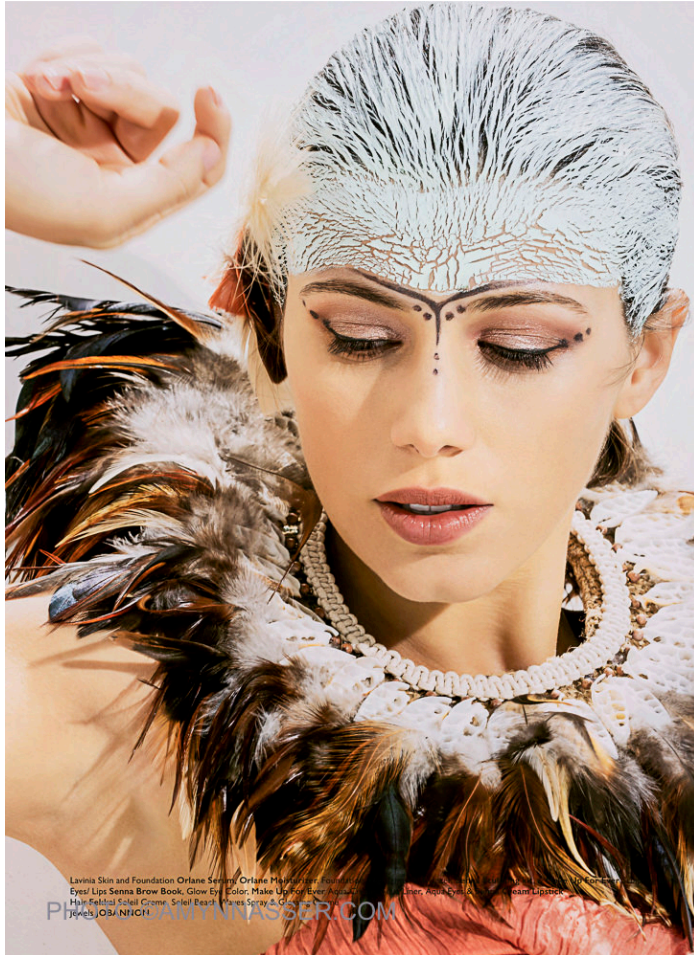


15b Lloyd Road Singapore 239098 (co. reg. 201004398N)
helpdesk 656.227.2902, fax 656.227.0213

Amy Nasser

Photography
United States

View the full portfolio at <http://www.thecreativefinder.com/amynasser>



Lavella Skin and Foundation Orlane Sensory Orlane Makeup Artist Foundation
Eyes Lips Senna Brow Book Glow Ey Color Make Up for Ever Makeup
Hair Fedral Eled Crime Sibel Ears Eves Spray & Glow
Photo: JOE NICHOL AMYNNASSER.COM

15b Lloyd Road Singapore 239098 (co. reg. 201004398N)
helpdesk 656.227.2902, fax 656.227.0213

Amy Nasser

Photography
United States

View the full portfolio at <http://www.thecreativefinder.com/amynasser>



15b Lloyd Road Singapore 239098 (co. reg. 201004398N)
helpdesk 656.227.2902, fax 656.227.0213

Amy Nasser

Photography
United States

View the full portfolio at <http://www.thecreativefinder.com/amynasser>



15b Lloyd Road Singapore 239098 (co. reg. 201004398N)
helpdesk 656.227.2902, fax 656.227.0213

View the full portfolio at <http://www.thecreativefinder.com/amynnasser>



Photography United States

View the full portfolio at <http://www.thecreativefinder.com/amynnasser>



15b Lloyd Road Singapore 239098 (co. reg. 201004398N)
helpdesk 656.227.2902, fax 656.227.0213

Amyn Nasser

Photography
United States

View the full portfolio at <http://www.thecreativefinder.com/amynnasser>



Amyn Nasser

Photography
United States

View the full portfolio at <http://www.thecreativefinder.com/amynnasser>



Amy Nasser

Photography
United States

View the full portfolio at <http://www.thecreativefinder.com/amynasser>



Amy Nasser

Photography
United States

View the full portfolio at <http://www.thecreativefinder.com/amynasser>



Amy Nasser

Photography
United States

View the full portfolio at <http://www.thecreativefinder.com/amynasser>



Please kindly get in touch for portfolio works.

Please kindly get in touch for portfolio works.

Please kindly get in touch for portfolio works.

15b Lloyd Road Singapore 239098 (co. reg. 201004398N)
helpdesk 656.227.2902, fax 656.227.0213